

# Cytokeratin 20 (KRT20) Rabbit pAb

Catalog No.: A0248

## Basic Information

### Observed MW

43kDa

### Calculated MW

48kDa

### Category

Primary antibody

### Applications

ELISA, WB, IF/ICC

### Cross-Reactivity

Human, Mouse

## Background

The protein encoded by this gene is a member of the keratin family. The keratins are intermediate filament proteins responsible for the structural integrity of epithelial cells and are subdivided into cytokeratins and hair keratins. The type I cytokeratins consist of acidic proteins which are arranged in pairs of heterotypic keratin chains. This cytokeratin is a major cellular protein of mature enterocytes and goblet cells and is specifically expressed in the gastric and intestinal mucosa. The type I cytokeratin genes are clustered in a region of chromosome 17q12-q21.

## Recommended Dilutions

WB 1:500 - 1:2000

IF/ICC 1:50 - 1:200

## Immunogen Information

### Gene ID

54474

### Swiss Prot

P35900

### Immunogen

Recombinant fusion protein containing a sequence corresponding to amino acids 245-424 of human Cytokeratin 20 (Cytokeratin 20 (KRT20)) (NP\_061883.1).

### Synonyms

K20; CD20; CK20; CK-20; KRT21; Cytokeratin 20 (KRT20)

## Contact

☎ | 400-999-6126

✉ | [cn.market@abclonal.com.cn](mailto:cn.market@abclonal.com.cn)

🌐 | [www.abclonal.com.cn](http://www.abclonal.com.cn)

## Product Information

### Source

Rabbit

### Isotype

IgG

### Purification

Affinity purification

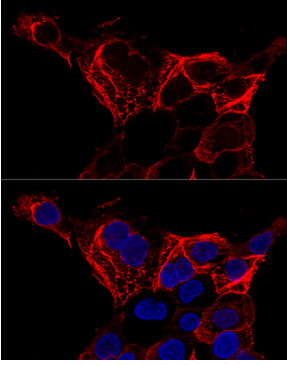
### Storage

Store at -20°C. Avoid freeze / thaw cycles.

Buffer: PBS with 0.02% sodium azide, 50% glycerol, pH7.3.

## Validation Data

---



Confocal immunofluorescence analysis of A-431 cells using Cytokeratin 20 (Cytokeratin 20 (KRT20)) antibody (A0248) at dilution of 1:200. Blue: DAPI for nuclear staining.