

# SOD1 Rabbit pAb

Catalog No.: A0274

29 Publications

## Basic Information

### Observed MW

16-18kDa

### Calculated MW

16kDa

### Category

Primary antibody

### Applications

ELISA, WB, IHC-P, IF/ICC, IP

### Cross-Reactivity

Human, Mouse, Rat

## Background

The protein encoded by this gene binds copper and zinc ions and is one of two isozymes responsible for destroying free superoxide radicals in the body. The encoded isozyme is a soluble cytoplasmic protein, acting as a homodimer to convert naturally-occurring but harmful superoxide radicals to molecular oxygen and hydrogen peroxide. The other isozyme is a mitochondrial protein. In addition, this protein contains an antimicrobial peptide that displays antibacterial, antifungal, and anti-MRSA activity against *E. coli*, *E. faecalis*, *S. aureus*, *S. aureus* MRSA LPV+, *S. agalactiae*, and yeast *C. krusei*. Mutations in this gene have been implicated as causes of familial amyotrophic lateral sclerosis. Rare transcript variants have been reported for this gene.

## Recommended Dilutions

WB	1:500 - 1:1000
IHC-P	1:50 - 1:200
IF/ICC	1:50 - 1:200
IP	0.5µg-4µg antibody for 200µg-400µg extracts of whole cells

## Immunogen Information

### Gene ID

6647

### Swiss Prot

P00441

### Immunogen

Recombinant fusion protein containing a sequence corresponding to amino acids 2-154 of human SOD1 (NP\_000445.1).

### Synonyms

ALS; SOD; ALS1; IPOA; STAHP; hSod1; HEL-S-44; homodimer; SOD1

## Contact

☎	400-999-6126
✉	cn.market@abclonal.com.cn
🌐	www.abclonal.com.cn

## Product Information

### Source

Rabbit

### Isotype

IgG

### Purification

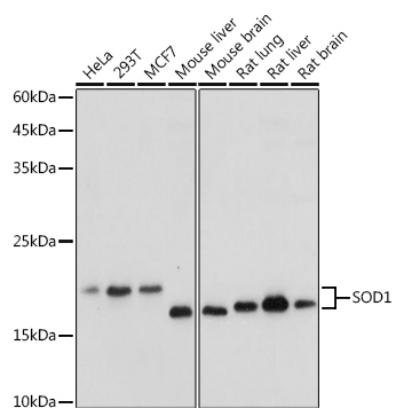
Affinity purification

### Storage

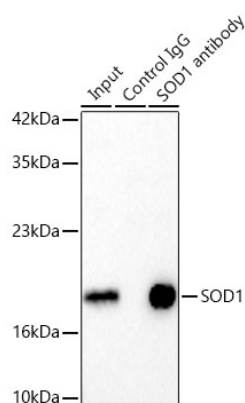
Store at -20°C. Avoid freeze / thaw cycles.

Buffer: PBS with 0.05% proclin300, 50% glycerol, pH7.3.

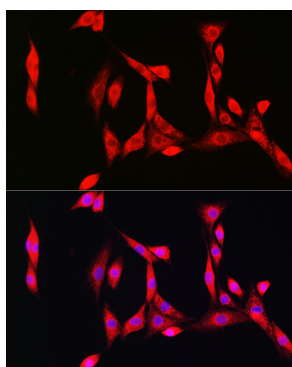
## Validation Data



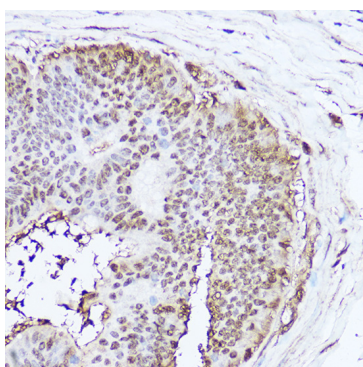
Western blot analysis of various lysates using SOD1 Rabbit pAb (A0274) at 1:1000 dilution.  
 Secondary antibody: HRP Goat Anti-Rabbit IgG (H+L) (AS014) at 1:10000 dilution.  
 Lysates/proteins: 25µg per lane.  
 Blocking buffer: 3% nonfat dry milk in TBST.  
 Detection: ECL Basic Kit (RM00020).  
 Exposure time: 1s.



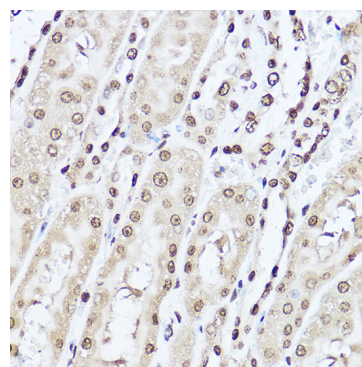
Immunoprecipitation of SOD1 in 300 µg extracts from MCF7 cells using 3 µg SOD1 Rabbit pAb (A0274).  
 Western blot analysis was performed using SOD1 Rabbit pAb (A0274) at 1:1000 dilution.



Immunofluorescence analysis of NIH/3T3 cells using SOD1 Rabbit pAb (A0274) at dilution of 1:100 (40x lens). Secondary antibody: Cy3 Goat Anti-Rabbit IgG (H+L) (AS007) at 1:500 dilution. Blue: DAPI for nuclear staining.



Immunohistochemistry analysis of SOD1 in paraffin-embedded human colon carcinoma using SOD1 Rabbit pAb (A0274) at dilution of 1:100 (40x lens). Perform high pressure antigen retrieval with 10 mM citrate buffer pH 6.0 before commencing with IHC staining protocol.



Immunohistochemistry analysis of SOD1 in paraffin-embedded rat kidney using SOD1 Rabbit pAb (A0274) at dilution of 1:100 (40x lens). Perform high pressure antigen retrieval with 10 mM citrate buffer pH 6.0 before commencing with IHC staining protocol.