

# RYR2 Rabbit pAb

Catalog No.: A0298SP **9 Publications**

## Basic Information

### Observed MW

565 kDa

### Calculated MW

565 kDa

### Category

Primary antibody

### Applications

WB,IF-P,IHC-P,ELISA

### Cross-Reactivity

Human, Mouse, Rat

## Background

This gene encodes a ryanodine receptor found in cardiac muscle sarcoplasmic reticulum. The encoded protein is one of the components of a calcium channel, composed of a tetramer of the ryanodine receptor proteins and a tetramer of FK506 binding protein 1B proteins, that supplies calcium to cardiac muscle. Mutations in this gene are associated with stress-induced polymorphic ventricular tachycardia and arrhythmogenic right ventricular dysplasia.

## Recommended Dilutions

**WB** 1:1000 - 1:5000

**IF-P** 1:100 - 1:200

**IHC-P** 1:300 - 1:1200

**ELISA** Recommended starting concentration is 1 µg/mL. Please optimize the concentration based on your specific assay requirements. For high-ratio antibody dilutions (≥1:10000) a sequential dilution method is strongly recommended to ensure measurement accuracy.

## Immunogen Information

### Gene ID

6262

### Swiss Prot

Q92736

### Immunogen

This information is considered to be commercially sensitive.

### Synonyms

RyR; ARVC2; ARVD2; RYR-2; VTSIP; VACRDS; RYR2

## Product Information

### Source

Rabbit

### Isotype

IgG

### Purification

Affinity purification

### Storage

Store at -20°C. Avoid freeze / thaw cycles.

Buffer: PBS, pH 7.3, containing 50% glycerol. Preserved with Proclin300 or sodium azide.

May contain 0.05% BSA as specified on the Certificate of Analysis.

## Contact

---

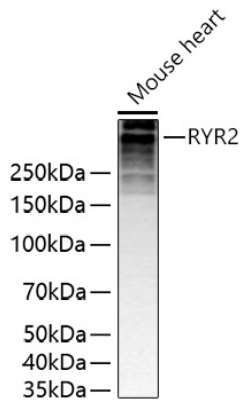
 | 400-999-6126

 | [cn.market@abclonal.com.cn](mailto:cn.market@abclonal.com.cn)

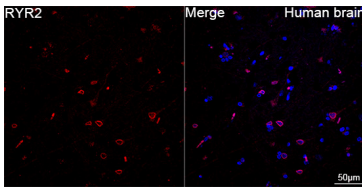
 | [www.abclonal.com.cn](http://www.abclonal.com.cn)

---

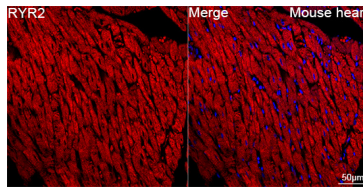
## Validation Data



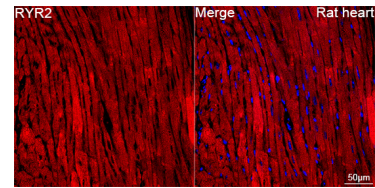
Western blot analysis of lysates from Mouse heart using RYR2 Rabbit pAb (A0298SP) at 1:2000 dilution incubated at room temperature for 1.5 hours.  
 Secondary antibody: HRP-conjugated Goat anti-Rabbit IgG (H+L) (AS014) at 1:10000 dilution.  
 Lysates/proteins: 25 µg per lane.  
 Blocking buffer: 3% nonfat dry milk in TBST.  
 Detection: ECL Basic Kit (RM00020).  
 Exposure time: 5 s.



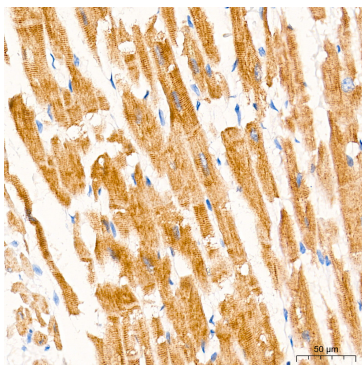
Confocal imaging of paraffin-embedded Human brain tissue using RYR2 Rabbit pAb (A0298SP, dilution 1:200) followed by a further incubation with Cy3-conjugated Goat anti-Rabbit IgG (H+L) (AS007, dilution 1:500) (Red). DAPI was used for nuclear staining (Blue). High pressure antigen retrieval performed with 0.01M Citrate Buffer (pH 6.0) prior to IF staining. Objective: 40x.



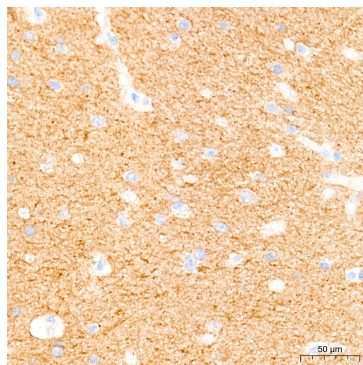
Confocal imaging of paraffin-embedded Mouse heart tissue using RYR2 Rabbit pAb (A0298SP, dilution 1:200) followed by a further incubation with Cy3-conjugated Goat anti-Rabbit IgG (H+L) (AS007, dilution 1:500) (Red). DAPI was used for nuclear staining (Blue). High pressure antigen retrieval performed with 0.01M Citrate Buffer (pH 6.0) prior to IF staining. Objective: 40x.



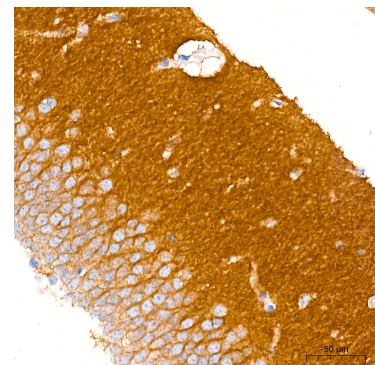
Confocal imaging of paraffin-embedded Rat heart tissue using RYR2 Rabbit pAb (A0298SP, dilution 1:200) followed by a further incubation with Cy3-conjugated Goat anti-Rabbit IgG (H+L) (AS007, dilution 1:500) (Red). DAPI was used for nuclear staining (Blue). High pressure antigen retrieval performed with 0.01M Citrate Buffer (pH 6.0) prior to IF staining. Objective: 40x.



Immunohistochemistry analysis of paraffin-embedded Human heart tissue using RYR2 Rabbit pAb (A0298SP) at a dilution of 1:500 (40x lens). High pressure antigen retrieval performed with 0.01M Tris-EDTA Buffer (pH 9.0) prior to IHC staining.



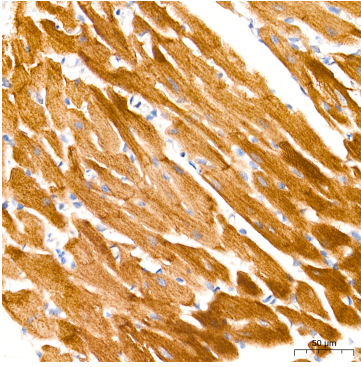
Immunohistochemistry analysis of paraffin-embedded Human brain tissue using RYR2 Rabbit pAb (A0298SP) at a dilution of 1:500 (40x lens). High pressure antigen retrieval performed with 0.01M Tris-EDTA Buffer (pH 9.0) prior to IHC staining.



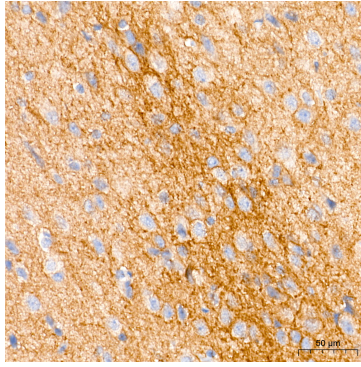
Immunohistochemistry analysis of paraffin-embedded Mouse brain tissue using RYR2 Rabbit pAb (A0298SP) at a dilution of 1:500 (40x lens). High pressure antigen retrieval performed with 0.01M Tris-EDTA Buffer (pH 9.0) prior to IHC staining.

## Validation Data

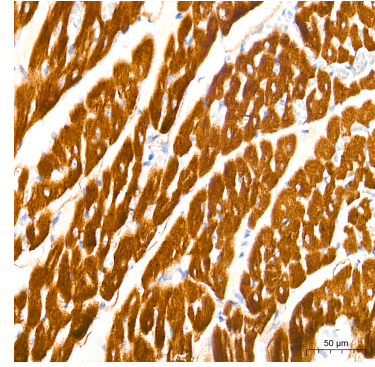
---



Immunohistochemistry analysis of paraffin-embedded Mouse heart tissue using RYR2 Rabbit pAb (A0298SP) at a dilution of 1:500 (40x lens). High pressure antigen retrieval performed with 0.01M Tris-EDTA Buffer (pH 9.0) prior to IHC staining.



Immunohistochemistry analysis of paraffin-embedded Rat brain tissue using RYR2 Rabbit pAb (A0298SP) at a dilution of 1:500 (40x lens). High pressure antigen retrieval performed with 0.01M Tris-EDTA Buffer (pH 9.0) prior to IHC staining.



Immunohistochemistry analysis of paraffin-embedded Rat heart tissue using RYR2 Rabbit pAb (A0298SP) at a dilution of 1:500 (40x lens). High pressure antigen retrieval performed with 0.01M Tris-EDTA Buffer (pH 9.0) prior to IHC staining.