

CRM1/XPO1 Rabbit pAb

Catalog No.: A0299 **1 Publications**

Basic Information

Observed MW

123kDa

Calculated MW

123kDa

Category

Primary antibody

Applications

ELISA, WB

Cross-Reactivity

Human, Mouse

Background

This cell-cycle-regulated gene encodes a protein that mediates leucine-rich nuclear export signal (NES)-dependent protein transport. The protein specifically inhibits the nuclear export of Rev and U snRNAs. It is involved in the control of several cellular processes by controlling the localization of cyclin B, MPAK, and MAPKAP kinase 2. This protein also regulates NFAT and AP-1.

Recommended Dilutions

WB 1:500 - 1:1000

Immunogen Information

Gene ID

7514

Swiss Prot

O14980

Immunogen

A synthetic peptide corresponding to a sequence within amino acids 964-1064 of human CRM1/CRM1/XPO1 (NP_003391.1).

Synonyms

emb; CRM1; exp1; CRM-1; CRM1/XPO1

Contact

 | 400-999-6126

 | cn.market@abclonal.com.cn

 | www.abclonal.com.cn

Product Information

Source

Rabbit

Isotype

IgG

Purification

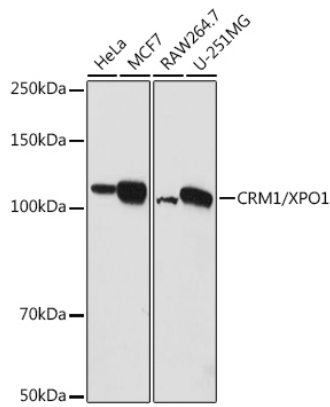
Affinity purification

Storage

Store at -20°C. Avoid freeze / thaw cycles.

Buffer: PBS with 0.05% proclin300, 50% glycerol, pH7.3.

Validation Data



Western blot analysis of extracts of various cell lines, using CRM1/XPO1 antibody (A0299) at 1:1000 dilution.

Secondary antibody: HRP Goat Anti-Rabbit IgG (H+L) (AS014) at 1:10000 dilution.

Lysates/proteins: 25µg per lane.

Blocking buffer: 3% nonfat dry milk in TBST.

Detection: ECL Basic Kit (RM00020).

Exposure time: 180s.