

Albumin Rabbit pAb

Catalog No.: A0353SP **12 Publications**

Basic Information

Observed MW

67 kDa

Calculated MW

45 kDa/47 kDa/69 kDa

Category

Primary antibody

Applications

WB,IF/ICC,IHC-P,ELISA

Cross-Reactivity

Human, Mouse, Rat

Background

This gene encodes the most abundant protein in human blood. This protein functions in the regulation of blood plasma colloid osmotic pressure and acts as a carrier protein for a wide range of endogenous molecules including hormones, fatty acids, and metabolites, as well as exogenous drugs. Additionally, this protein exhibits an esterase-like activity with broad substrate specificity. The encoded preproprotein is proteolytically processed to generate the mature protein. A peptide derived from this protein, EPI-X4, is an endogenous inhibitor of the CXCR4 chemokine receptor.

Recommended Dilutions

WB 1:5000 - 1:10000

IF/ICC 1:200 - 1:500

IHC-P 1:1000 - 1:6000

ELISA Recommended starting concentration is 1 µg/mL. Please optimize the concentration based on your specific assay requirements. For high-ratio antibody dilutions ($\geq 1:10000$) a sequential dilution method is strongly recommended to ensure measurement accuracy.

Immunogen Information

Gene ID

213

Swiss Prot

P02768

Immunogen

This information is considered to be commercially sensitive.

Synonyms

HSA; FDAHT; PRO0883; PRO0903; PRO1341; Albumin

Product Information

Source

Rabbit

Isotype

IgG

Purification

Affinity purification

Storage

Store at -20°C. Avoid freeze / thaw cycles.

Buffer: PBS, pH 7.3, containing 50% glycerol. Preserved with Proclin300 or sodium azide.

May contain 0.05% BSA as specified on the Certificate of Analysis.

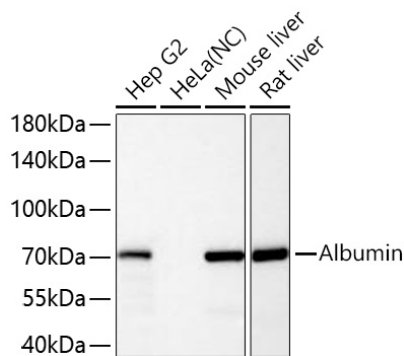
Contact

 | 400-999-6126

 | cn.market@abclonal.com.cn

 | www.abclonal.com.cn

Validation Data



Western blot analysis of various lysates using Albumin Rabbit pAb (A0353SP) at 1:5000 dilution incubated overnight at 4°C.

Secondary antibody: HRP-conjugated Goat anti-Rabbit IgG (H+L) (AS014) at 1:10000 dilution.

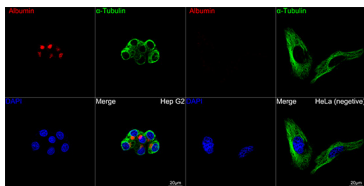
Lysates/proteins: 25 µg per lane.

Blocking buffer: 3% nonfat dry milk in TBST.

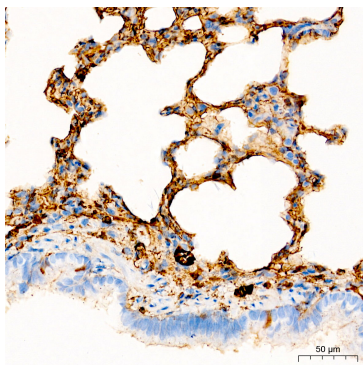
Detection: ECL Basic Kit (RM00020).

Negative control (NC): HeLa.

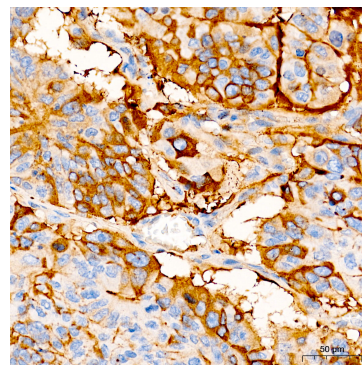
Exposure time: 10 s.



Confocal imaging of Hep G2 cells and HeLa (negative) cells using Albumin Rabbit pAb (A0353SP, dilution 1:400) followed by a further incubation with Cy3-conjugated Goat anti-Rabbit IgG (H+L) (AS007, dilution 1:500) (Red). The cells were counterstained with α -Tubulin Mouse mAb (AC012, dilution 1:400) followed by incubation with ABflo® 488-conjugated Goat Anti-Mouse IgG (H+L) Ab (AS076, dilution 1:500) (Green). DAPI was used for nuclear staining (Blue). Objective: 100x.



Immunohistochemistry analysis of paraffin-embedded Rat lung tissue using Albumin Rabbit pAb (A0353SP) at a dilution of 1:1000 (40x lens). High pressure antigen retrieval performed with 0.01M Tris-EDTA Buffer (pH 9.0) prior to IHC staining.



Immunohistochemistry analysis of paraffin-embedded Human colon carcinoma tissue using Albumin Rabbit pAb (A0353SP) at a dilution of 1:1000 (40x lens). High pressure antigen retrieval performed with 0.01M Tris-EDTA Buffer (pH 9.0) prior to IHC staining.