

Cytokeratin 18 (KRT18) Mouse mAb

Catalog No.: A0389

1 Publications

Basic Information

Observed MW

48kDa

Calculated MW

48kDa

Category

Primary antibody

Applications

ELISA, WB

Cross-Reactivity

Human

Background

KRT18 encodes the type I intermediate filament chain keratin 18. Keratin 18, together with its filament partner keratin 8, are perhaps the most commonly found members of the intermediate filament gene family. They are expressed in single layer epithelial tissues of the body. Mutations in this gene have been linked to cryptogenic cirrhosis. Two transcript variants encoding the same protein have been found for this gene.

Recommended Dilutions

WB 1:1000 - 1:4000

Immunogen Information

Gene ID

3875

Swiss Prot

P05783

Immunogen

Recombinant protein of human KRT18

Synonyms

K18; CK-18; CYK18; Cytokeratin 18 (KRT18)

Contact

☎ | 400-999-6126

✉ | cn.market@abclonal.com.cn

🌐 | www.abclonal.com.cn

Product Information

Source

Mouse

Isotype

IgG

Purification

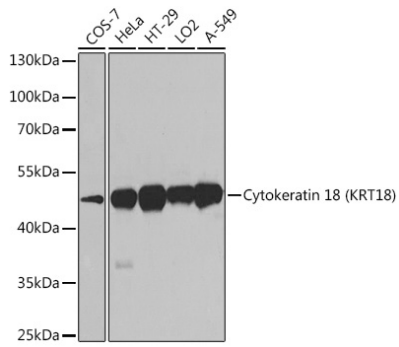
Affinity purification

Storage

Store at -20°C. Avoid freeze / thaw cycles.

Buffer: PBS with 0.02% sodium azide, 50% glycerol, pH 7.3.

Validation Data



Western blot analysis of various lysates using Cytokeratin 18 (KRT18) Mouse mAb (A0389) at 1:2000 dilution.

Secondary antibody: HRP Goat Anti-Mouse IgG (H+L) (AS003) at 1:10000 dilution.

Lysates/proteins: 25µg per lane.

Blocking buffer: 3% nonfat dry milk in TBST.

Detection: ECL Basic Kit (RM00020).

Exposure time: 60s.