

PPIG Rabbit pAb

Catalog No.: A0429

Basic Information

Observed MW

110kDa

Calculated MW

89kDa

Category

Primary antibody

Applications

ELISA, WB

Cross-Reactivity

Human

Background

Enables cyclosporin A binding activity and peptidyl-prolyl cis-trans isomerase activity. Involved in protein peptidyl-prolyl isomerization. Located in cytosol and nuclear speck.

Recommended Dilutions

WB 1:500 - 1:2000

Immunogen Information

Gene ID

9360

Swiss Prot

Q13427

Immunogen

A synthetic peptide corresponding to a sequence within amino acids 1-100 of human PPIG (NP_004783.2).

Synonyms

CYP; SRCyp; SCAF10; CARS-Cyp; PPIG

Contact

☎ | 400-999-6126

✉ | cn.market@abclonal.com.cn

🌐 | www.abclonal.com.cn

Product Information

Source

Rabbit

Isotype

IgG

Purification

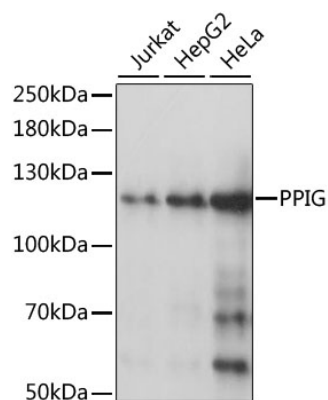
Affinity purification

Storage

Store at -20°C. Avoid freeze / thaw cycles.

Buffer: PBS with 0.01% thimerosal, 50% glycerol, pH7.3.

Validation Data



Western blot analysis of various lysates using PPIG Rabbit pAb (A0429) at 1:1000 dilution.
Secondary antibody: HRP Goat Anti-Rabbit IgG (H+L) (AS014) at 1:10000 dilution.
Lysates/proteins: 25µg per lane.
Blocking buffer: 3% nonfat dry milk in TBST.
Detection: ECL Basic Kit (RM00020).
Exposure time: 3s.