

# Desmocollin 3 Rabbit mAb

Catalog No.: A0445 **Recombinant**

## Basic Information

**Observed MW**

100kDa

**Calculated MW**

100kDa

**Category**

Primary antibody

**Applications**

ELISA, WB

**Cross-Reactivity**

Human

**CloneNo number**

ARC2506

**Conjugate**

Unmodified

## Recommended Dilutions

**WB** 1:500 - 1:1000

## Background

The protein encoded by this gene is a calcium-dependent glycoprotein that is a member of the desmocollin subfamily of the cadherin superfamily. These desmosomal family members, along with the desmogleins, are found primarily in epithelial cells where they constitute the adhesive proteins of the desmosome cell-cell junction and are required for cell adhesion and desmosome formation. The desmosomal family members are arranged in two clusters on chromosome 18, occupying less than 650 kb combined. Mutations in this gene are a cause of hypotrichosis and recurrent skin vesicles disorder. The protein can act as an autoantigen in pemphigus diseases, and it is also considered to be a biomarker for some cancers. Alternative splicing of this gene results in multiple transcript variants.

## Immunogen Information

**Gene ID**

1825

**Swiss Prot**

Q14574

**Immunogen**

A synthetic peptide corresponding to a sequence within amino acids 797-896 of human Desmocollin 3 (Q14574).

**Synonyms**

DSC; DSC1; DSC2; DSC4; CDHF3; HT-CP; Desmocollin 3

## Contact

 | 400-999-6126 | [cn.market@abclonal.com.cn](mailto:cn.market@abclonal.com.cn) | [www.abclonal.com.cn](http://www.abclonal.com.cn)

## Product Information

**Source**

Rabbit

**Isotype**

IgG

**Purification**

Affinity purification

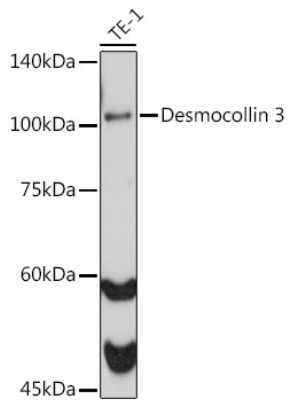
**Storage**

Store at -20°C. Avoid freeze / thaw cycles.

Buffer: PBS with 0.02% sodium azide, 0.05% BSA, 50% glycerol, pH7.3.

## Validation Data

---



Western blot analysis of extracts of TE-1 cells, using Desmocollin 3 antibody (A0445) at 1:1000 dilution.  
Secondary antibody: HRP Goat Anti-Rabbit IgG (H+L) (AS014) at 1:10000 dilution.  
Lysates/proteins: 25µg per lane.  
Blocking buffer: 3% nonfat dry milk in TBST.  
Detection: ECL Basic Kit (RM00020).  
Exposure time: 60s.