

SSCA1/Serp1nB3 Rabbit mAb

Catalog No.: A0455 **Recombinant**

Basic Information

Observed MW

Refer to figures

Calculated MW

45kDa

Category

Primary antibody

Applications

ELISA, IHC-P

Cross-Reactivity

Mouse, Rat

CloneNo number

ARC2508

Background

Enables cysteine-type endopeptidase inhibitor activity; protease binding activity; and virus receptor activity. Involved in several processes, including autocrine signaling; paracrine signaling; and regulation of cellular protein metabolic process. Located in cytoplasmic vesicle; extracellular exosome; and nucleus.

Recommended Dilutions

IHC-P 1:50 - 1:200

Immunogen Information

Gene ID

6317

Swiss Prot

P29508

Immunogen

Recombinant fusion protein containing a sequence corresponding to amino acids 301-390 of human SSCA1/Serp1nB3 (P29508).

Synonyms

SCC; T4-A; SCCA1; SSCA1; SCCA-1; HsT1196; SCCA-PD; SSCA1/Serp1nB3

Contact

☎ | 400-999-6126

✉ | cn.market@abclonal.com.cn

🌐 | www.abclonal.com.cn

Product Information

Source

Rabbit

Isotype

IgG

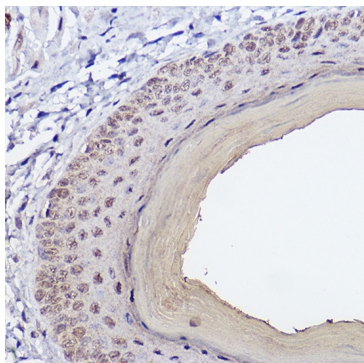
Purification

Affinity purification

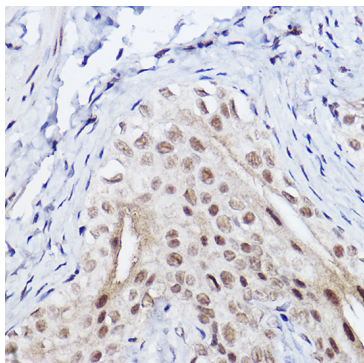
Storage

Store at -20°C. Avoid freeze / thaw cycles.

Buffer: PBS with 0.02% sodium azide, 0.05% BSA, 50% glycerol, pH7.3.



Immunohistochemistry analysis of paraffin-embedded Mouse skin using SSCA1/SerpinB3 Rabbit mAb (A0455) at dilution of 1:100 (40x lens). Perform high pressure antigen retrieval with 10 mM citrate buffer pH 6.0 before commencing with IHC staining protocol.



Immunohistochemistry analysis of paraffin-embedded rat bladder using SSCA1/SerpinB3 Rabbit mAb (A0455) at dilution of 1:100 (40x lens). Perform high pressure antigen retrieval with 10 mM citrate buffer pH 6.0 before commencing with IHC staining protocol.