

# Chk2 Rabbit pAb

Catalog No.: A0466

1 Publications

## Basic Information

### Observed MW

65kDa

### Calculated MW

61kDa

### Category

Primary antibody

### Applications

WB,IF/ICC,IP,(ELISA)

### Cross-Reactivity

Human

## Background

In response to DNA damage and replication blocks, cell cycle progression is halted through the control of critical cell cycle regulators. The protein encoded by this gene is a cell cycle checkpoint regulator and putative tumor suppressor. It contains a forkhead-associated protein interaction domain essential for activation in response to DNA damage and is rapidly phosphorylated in response to replication blocks and DNA damage. When activated, the encoded protein is known to inhibit CDC25C phosphatase, preventing entry into mitosis, and has been shown to stabilize the tumor suppressor protein p53, leading to cell cycle arrest in G1. In addition, this protein interacts with and phosphorylates BRCA1, allowing BRCA1 to restore survival after DNA damage. Mutations in this gene have been linked with Li-Fraumeni syndrome, a highly penetrant familial cancer phenotype usually associated with inherited mutations in TP53. Also, mutations in this gene are thought to confer a predisposition to sarcomas, breast cancer, and brain tumors. This nuclear protein is a member of the CDS1 subfamily of serine/threonine protein kinases. Several transcript variants encoding different isoforms have been found for this gene.

## Recommended Dilutions

|           |                |
|-----------|----------------|
| <b>WB</b> | 1:500 - 1:1000 |
|-----------|----------------|

|               |              |
|---------------|--------------|
| <b>IF/ICC</b> | 1:50 - 1:200 |
|---------------|--------------|

|           |  |
|-----------|--|
| <b>IP</b> | 0.5µg-4µg antibody for<br>200µg-400µg extracts of<br>whole cells |
|-----------|--|

|              |  |
|--------------|--|
| <b>ELISA</b> | Recommended starting<br>concentration is 1 µg/mL.<br>Please optimize the<br>concentration based on<br>your specific assay<br>requirements. |
|--------------|--|

## Contact

|  |  |              |
|--|--|--------------|
|  |  | 400-999-6126 |
|--|--|--------------|

|  |  |                           |
|--|--|---------------------------|
|  |  | cn.market@abclonal.com.cn |
|--|--|---------------------------|

|  |  |                     |
|--|--|---------------------|
|  |  | www.abclonal.com.cn |
|--|--|---------------------|

## Immunogen Information

### Gene ID

11200

### Swiss Prot

O96017

### Immunogen

Recombinant fusion protein containing a sequence corresponding to amino acids 1-220 of human Chk2 (NP\_009125.1).

### Synonyms

CDS1; CHK2; LFS2; RAD53; hCds1; HuCds1; PP1425; Chk2

## Product Information

### Source

Rabbit

### Isotype

IgG

### Purification

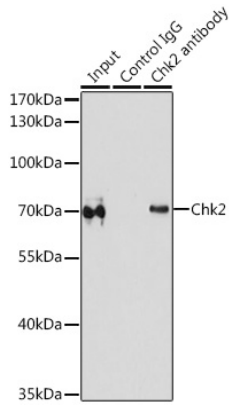
Affinity purification

### Storage

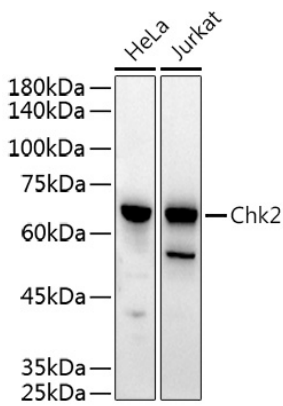
Store at -20°C. Avoid freeze / thaw cycles.

Buffer: PBS with 0.02% sodium azide,50% glycerol,pH7.3.

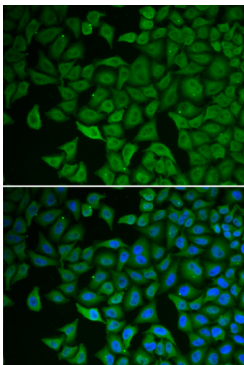
## Validation Data



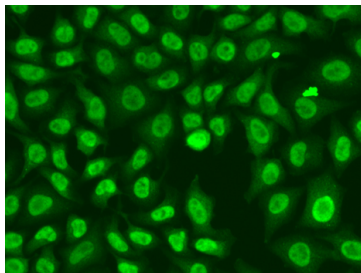
Immunoprecipitation analysis of 200 µg extracts of MCF-7 cells using 1 µg Chk2 antibody (A0466). Western blot was performed from the immunoprecipitate using Chk2 antibody (A0466) at a dilution of 1:1000.



Western blot analysis of various lysates using Chk2 Rabbit pAb (A0466) at 1:500 dilution. Secondary antibody: HRP-conjugated Goat anti-Rabbit IgG (H+L) (AS014) at 1:10000 dilution. Lysates/proteins: 25µg per lane. Blocking buffer: 3% nonfat dry milk in TBST. Detection: ECL Basic Kit (RM00020). Exposure time: 30s.



Immunofluorescence analysis of HeLa cells using Chk2 Rabbit pAb (A0466). Secondary antibody: Cy3-conjugated Goat anti-Rabbit IgG (H+L) (AS007) at 1:500 dilution. Blue: DAPI for nuclear staining.



Immunofluorescence analysis of A549 cells using Chk2 Rabbit pAb (A0466). Secondary antibody: Cy3-conjugated Goat anti-Rabbit IgG (H+L) (AS007) at 1:500 dilution.