

PKC delta Rabbit pAb

Catalog No.: A0471 **2 Publications**

Basic Information

Observed MW

78kDa/85kDa

Calculated MW

78kDa

Category

Primary antibody

Applications

ELISA, WB, IHC-P, IF/ICC

Cross-Reactivity

Human, Mouse, Rat

Background

The protein encoded by this gene is a member of the protein kinase C family of serine- and threonine-specific protein kinases. The encoded protein is activated by diacylglycerol and is both a tumor suppressor and a positive regulator of cell cycle progression. Also, this protein can positively or negatively regulate apoptosis. Defects in this gene are a cause of autoimmune lymphoproliferative syndrome.

Recommended Dilutions

WB	1:500 - 1:2000
IHC-P	1:50 - 1:100
IF/ICC	1:50 - 1:100

Immunogen Information

Gene ID

5580

Swiss Prot

Q05655

Immunogen

Recombinant fusion protein containing a sequence corresponding to amino acids 1-160 of human PKC delta (NP_006245.2).

Synonyms

MAY1; PKCD; ALPS3; CVID9; nPKC-delta; PKC delta

Contact

☎	400-999-6126
✉	cn.market@abclonal.com.cn
🌐	www.abclonal.com.cn

Product Information

Source

Rabbit

Isotype

IgG

Purification

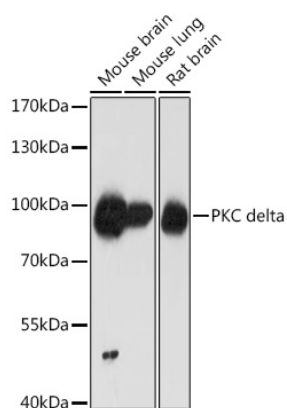
Affinity purification

Storage

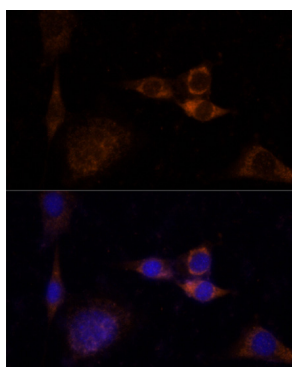
Store at -20°C. Avoid freeze / thaw cycles.

Buffer: PBS with 0.01% thimerosal, 50% glycerol, pH7.3.

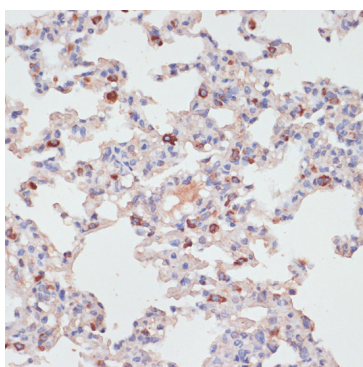
Validation Data



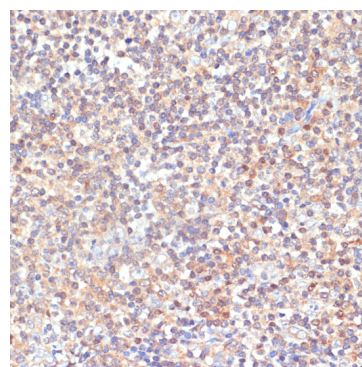
Western blot analysis of various lysates using PKC delta Rabbit pAb (A0471) at 1:1000 dilution.
 Secondary antibody: HRP Goat Anti-Rabbit IgG (H+L) (AS014) at 1:10000 dilution.
 Lysates/proteins: 25µg per lane.
 Blocking buffer: 3% nonfat dry milk in TBST.
 Detection: ECL Basic Kit (RM00020).
 Exposure time: 1min.



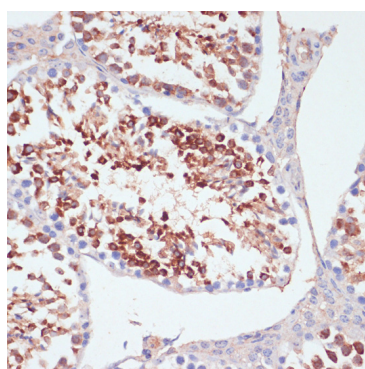
Immunofluorescence analysis of NIH/3T3 cells using PKC delta Rabbit pAb (A0471) at dilution of 1:100. Blue: DAPI for nuclear staining.



Immunohistochemistry analysis of PKC delta in paraffin-embedded rat lung using PKC delta Rabbit pAb (A0471) at dilution of 1:100 (40x lens). Perform microwave antigen retrieval with 10 mM PBS buffer pH 7.2 before commencing with IHC staining protocol.



Immunohistochemistry analysis of PKC delta in paraffin-embedded human tonsil using PKC delta Rabbit pAb (A0471) at dilution of 1:100 (40x lens). Perform microwave antigen retrieval with 10 mM PBS buffer pH 7.2 before commencing with IHC staining protocol.



Immunohistochemistry analysis of PKC delta in paraffin-embedded mouse testis using PKC delta Rabbit pAb (A0471) at dilution of 1:100 (40x lens). Perform microwave antigen retrieval with 10 mM PBS buffer pH 7.2 before commencing with IHC staining protocol.