

# MTCO2 Rabbit pAb

Catalog No.: A0526 **1 Publications**

## Basic Information

### Observed MW

24kDa

### Calculated MW

26kDa

### Category

Primary antibody

### Applications

WB

### Cross-Reactivity

Human

## Background

Contributes to cytochrome-c oxidase activity. Predicted to be involved in mitochondrial electron transport, cytochrome c to oxygen and positive regulation of vasoconstriction. Located in mitochondrial inner membrane. Part of respiratory chain complex IV. Biomarker of Huntington's disease and stomach cancer.

## Recommended Dilutions

WB 1:500 - 1:1000

## Immunogen Information

### Gene ID

4513

### Swiss Prot

P00403

### Immunogen

A synthetic peptide of human MTCO2

### Synonyms

COII; MTCO2; COX2

## Contact

 | 400-999-6126

 | [cn.market@abclonal.com.cn](mailto:cn.market@abclonal.com.cn)

 | [www.abclonal.com.cn](http://www.abclonal.com.cn)

## Product Information

### Source

Rabbit

### Isotype

IgG

### Purification

Affinity purification

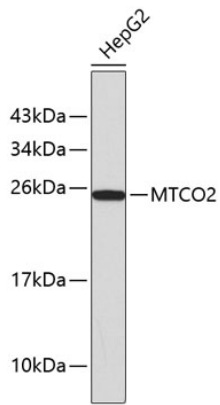
### Storage

Store at -20°C. Avoid freeze / thaw cycles.

Buffer: PBS with 0.02% sodium azide, 50% glycerol, pH7.3.

## Validation Data

---



Western blot analysis of lysates from HepG2 cells, using MTCO2 Rabbit pAb (A0526).  
Secondary antibody: HRP Goat Anti-Rabbit IgG (H+L) (AS014) at 1:10000 dilution.  
Lysates/proteins: 25µg per lane.  
Blocking buffer: 3% nonfat dry milk in TBST.