

GTF2F2 Rabbit mAb

Catalog No.: A0536 **Recombinant**

Basic Information

Observed MW

30kDa

Calculated MW

28kDa

Category

Primary antibody

Applications

ELISA, WB, IHC-P

Cross-Reactivity

Human, Mouse, Rat

CloneNo number

ARC2513

Background

Predicted to enable RNA polymerase II general transcription initiation factor activity. Involved in transcription by RNA polymerase II. Located in microtubule cytoskeleton and nucleoplasm. Part of transcription preinitiation complex.

Recommended Dilutions

WB 1:500 - 1:1000

IHC-P 1:50 - 1:200

Immunogen Information

Gene ID

2963

Swiss Prot

P13984

Immunogen

A synthetic peptide corresponding to a sequence within amino acids 1-100 of human GTF2F2 (P13984).

Synonyms

BTF4; RAP30; TF2F2; TFIIF; GTF2F2

Contact

☎ | 400-999-6126

✉ | cn.market@abclonal.com.cn

🌐 | www.abclonal.com.cn

Product Information

Source

Rabbit

Isotype

IgG

Purification

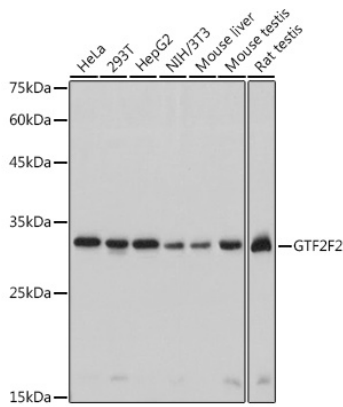
Affinity purification

Storage

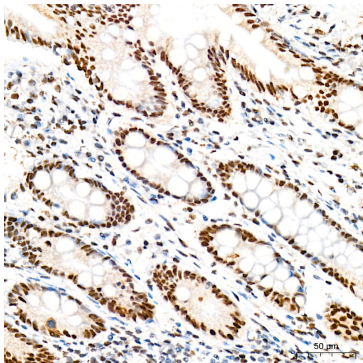
Store at -20°C. Avoid freeze / thaw cycles.

Buffer: PBS with 0.02% sodium azide, 0.05% BSA, 50% glycerol, pH7.3.

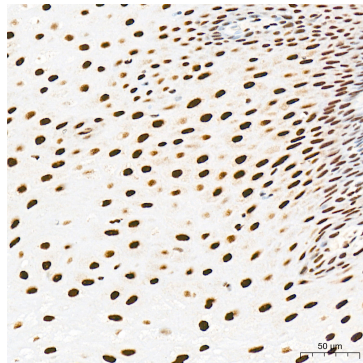
Validation Data



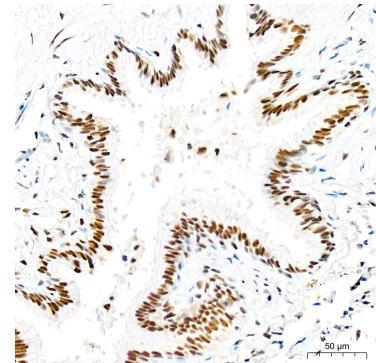
Western blot analysis of various lysates using GTF2F2 Rabbit mAb (A0536) at 1:1000 dilution. Secondary antibody: HRP Goat Anti-Rabbit IgG (H+L) (AS014) at 1:10000 dilution. Lysates/proteins: 25µg per lane. Blocking buffer: 3% nonfat dry milk in TBST. Detection: ECL Basic Kit (RM00020). Exposure time: 1s.



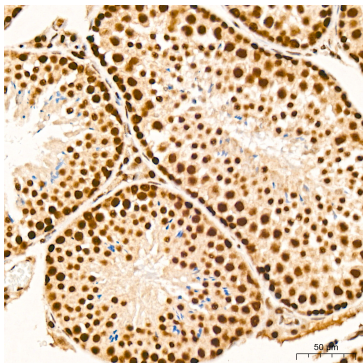
Immunohistochemistry analysis of GTF2F2 in paraffin-embedded human colon tissue using GTF2F2 Rabbit mAb (A0536) at a dilution of 1:200 (40x lens). High pressure antigen retrieval was performed with 0.01 M citrate buffer (pH 6.0) prior to IHC staining.



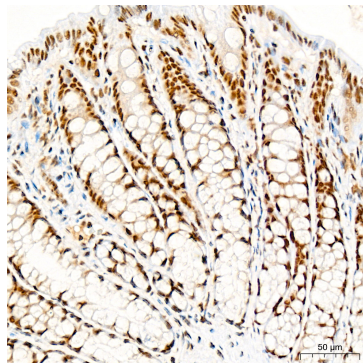
Immunohistochemistry analysis of GTF2F2 in paraffin-embedded human esophagus tissue using GTF2F2 Rabbit mAb (A0536) at a dilution of 1:200 (40x lens). High pressure antigen retrieval was performed with 0.01 M citrate buffer (pH 6.0) prior to IHC staining.



Immunohistochemistry analysis of GTF2F2 in paraffin-embedded human lung tissue using GTF2F2 Rabbit mAb (A0536) at a dilution of 1:200 (40x lens). High pressure antigen retrieval was performed with 0.01 M citrate buffer (pH 6.0) prior to IHC staining.



Immunohistochemistry analysis of GTF2F2 in paraffin-embedded mouse testis tissue using GTF2F2 Rabbit mAb (A0536) at a dilution of 1:200 (40x lens). High pressure antigen retrieval was performed with 0.01 M citrate buffer (pH 6.0) prior to IHC staining.



Immunohistochemistry analysis of GTF2F2 in paraffin-embedded rat colon tissue using GTF2F2 Rabbit mAb (A0536) at a dilution of 1:200 (40x lens). High pressure antigen retrieval was performed with 0.01 M citrate buffer (pH 6.0) prior to IHC staining.