

Rig-I/DDX58 Rabbit pAb

Catalog No.: A0550SP **15 Publications**

Basic Information

Observed MW

107 kDa

Calculated MW

101 kDa/107 kDa

Category

Primary antibody

Applications

WB, ELISA

Cross-Reactivity

Human, Mouse

Background

DEAD box proteins, characterized by the conserved motif Asp-Glu-Ala-Asp (DEAD), are putative RNA helicases which are implicated in a number of cellular processes involving RNA binding and alteration of RNA secondary structure. This gene encodes a protein containing RNA helicase-DEAD box protein motifs and a caspase recruitment domain (CARD). It is involved in viral double-stranded (ds) RNA recognition and the regulation of the antiviral innate immune response. Mutations in this gene are associated with Singleton-Merten syndrome 2.

Recommended Dilutions

WB 1:1000 - 1:5000

ELISA Recommended starting concentration is 1 µg/mL. Please optimize the concentration based on your specific assay requirements. For high-ratio antibody dilutions ($\geq 1:10000$) a sequential dilution method is strongly recommended to ensure measurement accuracy.

Immunogen Information

Gene ID

23586

Swiss Prot

O95786

Immunogen

This information is considered to be commercially sensitive.

Synonyms

RIG1; DDX58; RIG-I; RLR-1; SGMRT2; Rig-I/DDX58

Contact

 | 400-999-6126

 | cn.market@abclonal.com.cn

 | www.abclonal.com.cn

Product Information

Source

Rabbit

Isotype

IgG

Purification

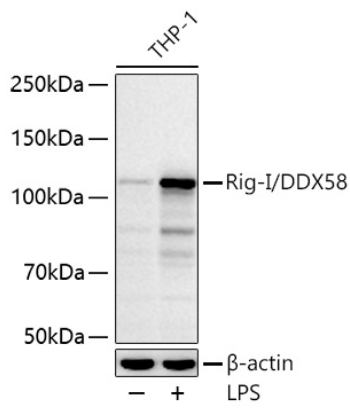
Affinity purification

Storage

Store at -20°C. Avoid freeze / thaw cycles.

Buffer: PBS, pH 7.3, containing 50% glycerol. Preserved with Proclin300 or sodium azide. May contain 0.05% BSA as specified on the Certificate of Analysis.

Validation Data



Western blot analysis of lysates from THP-1 cells using Rig-I/DDX58 Rabbit pAb (A0550SP) at 1:5000 dilution incubated overnight at 4°C. THP-1 cells were treated with LPS (1 µg/mL) at 37°C for 24 hours. Secondary antibody: HRP-conjugated Goat anti-Rabbit IgG (H+L) (AS014) at 1:10000 dilution. Lysates/proteins: 30 µg per lane. Blocking buffer: 3% nonfat dry milk in TBST. Detection: ECL Basic Kit (RM00020). Exposure time: 60 s.