

# SOX2 Rabbit pAb

Catalog No.: A0561

32 Publications

## Basic Information

**Observed MW**

35kDa

**Calculated MW**

34kDa

**Category**

Primary antibody

**Applications**

WB, IHC-P, IF/ICC, IP, ELISA

**Cross-Reactivity**

Human, Mouse, Rat

## Background

This intronless gene encodes a member of the SRY-related HMG-box (SOX) family of transcription factors involved in the regulation of embryonic development and in the determination of cell fate. The product of this gene is required for stem-cell maintenance in the central nervous system, and also regulates gene expression in the stomach. Mutations in this gene have been associated with optic nerve hypoplasia and with syndromic microphthalmia, a severe form of structural eye malformation. This gene lies within an intron of another gene called SOX2 overlapping transcript (SOX2OT).

## Recommended Dilutions

**WB** 1:500 - 1:1000**IHC-P** 1:50 - 1:200**IF/ICC** 1:50 - 1:200**IP** 0.5µg-4µg antibody for  
200µg-400µg extracts of  
whole cells**ELISA** Recommended starting  
concentration is 1 µg/mL.  
Please optimize the  
concentration based on  
your specific assay  
requirements.

## Immunogen Information

**Gene ID**

6657

**Swiss Prot**

P48431

**Immunogen**

Recombinant protein (or fragment). This information is considered to be commercially sensitive.

**Synonyms**

ANOP3; MCOPS3; SOX2

## Product Information

**Source**

Rabbit

**Isotype**

IgG

**Purification**

Affinity purification

**Storage**

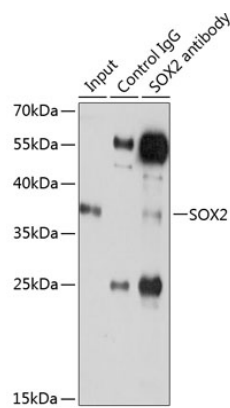
Store at -20°C. Avoid freeze / thaw cycles.

Buffer: PBS with 0.09% Sodium azide, 50% glycerol, pH7.3.

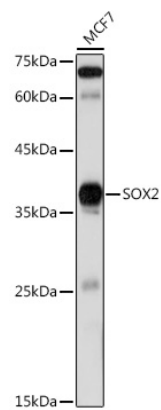
## Contact

 | 400-999-6126 | [cn.market@abclonal.com.cn](mailto:cn.market@abclonal.com.cn) | [www.abclonal.com.cn](http://www.abclonal.com.cn)

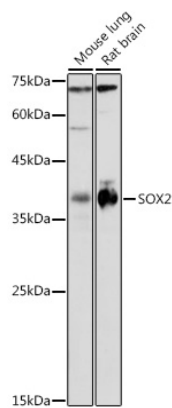
Validation Data



Immunoprecipitation analysis of 200 µg extracts of C6 cells using 3 µg SOX2 antibody (A0561). Western blot was performed from the immunoprecipitate using SOX2 antibody (A0561) at a dilution of 1:500.

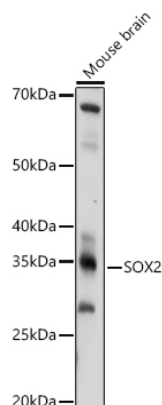


Western blot analysis of lysates from MCF7 cells, using SOX2 Rabbit pAb (A0561) at 1:1000 dilution. Secondary antibody: HRP-conjugated Goat anti-Rabbit IgG (H+L) (AS014) at 1:10000 dilution. Lysates/proteins: 25µg per lane. Blocking buffer: 3% nonfat dry milk in TBST. Detection: ECL Basic Kit (RM00020). Exposure time: 60s.

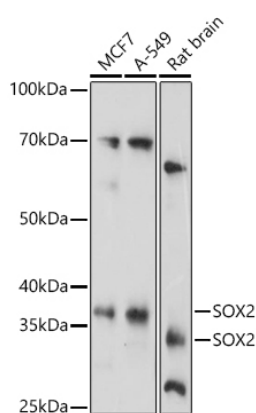


Western blot analysis of various lysates using SOX2 Rabbit pAb (A0561) at 1:1000 dilution. Secondary antibody: HRP-conjugated Goat anti-Rabbit IgG (H+L) (AS014) at 1:10000 dilution. Lysates/proteins: 25µg per lane. Blocking buffer: 3% nonfat dry milk in TBST. Detection: ECL Basic Kit (RM00020). Exposure time: 180s.

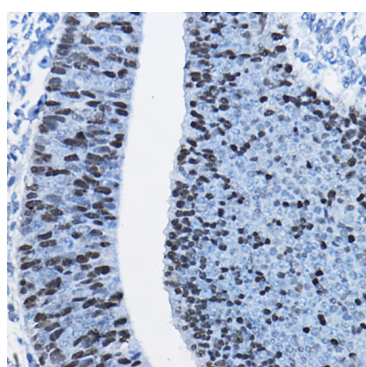
## Validation Data



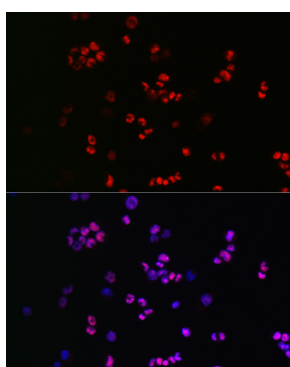
Western blot analysis of lysates from Mouse brain, using SOX2 Rabbit pAb (A0561) at 1:1000 dilution. Secondary antibody: HRP-conjugated Goat anti-Rabbit IgG (H+L) (AS014) at 1:10000 dilution. Lysates/proteins: 25µg per lane. Blocking buffer: 3% nonfat dry milk in TBST. Detection: ECL Basic Kit (RM00020). Exposure time: 10s.



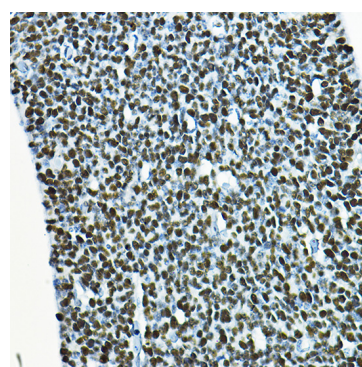
Western blot analysis of various lysates using SOX2 Rabbit pAb (A0561) at 1:1000 dilution. Secondary antibody: HRP-conjugated Goat anti-Rabbit IgG (H+L) (AS014) at 1:10000 dilution. Lysates/proteins: 25µg per lane. Blocking buffer: 3% nonfat dry milk in TBST. Detection: ECL Basic Kit (RM00020). Exposure time: 60s.



Immunohistochemistry analysis of paraffin-embedded Mouse embryos using SOX2 Rabbit pAb (A0561) at dilution of 1:100 (40x lens). High pressure antigen retrieval performed with 0.01M Citrate buffer (pH 6.0) prior to IHC staining.



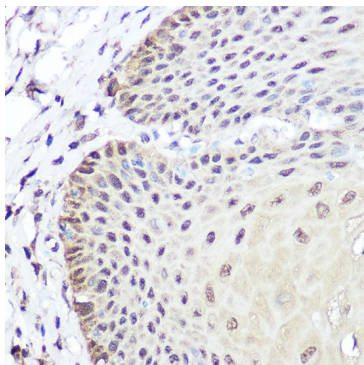
Immunofluorescence analysis of F9 cells using SOX2 Rabbit pAb (A0561) at dilution of 1:50 (40x lens). Secondary antibody: Cy3-conjugated Goat anti-Rabbit IgG (H+L) (AS007) at 1:500 dilution. Blue: DAPI for nuclear staining.



Immunohistochemistry analysis of paraffin-embedded Mouse embryos using SOX2 Rabbit pAb (A0561) at dilution of 1:100 (40x lens). High pressure antigen retrieval performed with 0.01M Citrate buffer (pH 6.0) prior to IHC staining.

## Validation Data

---



Immunohistochemistry analysis of paraffin-embedded Human esophageal using SOX2 Rabbit pAb (A0561) at dilution of 1:100 (40x lens). Microwave antigen retrieval performed with 0.01M Tris/EDTA Buffer (pH 9.0) prior to IHC staining.