

# GBP1 Rabbit mAb

Catalog No.: A0570 **Recombinant**

## Basic Information

### Observed MW

50-55\68kDa

### Calculated MW

68kDa

### Category

Primary antibody

### Applications

ELISA, WB, IHC-P

### Cross-Reactivity

Human, Rat

### CloneNo number

ARC2521

## Background

Guanylate binding protein expression is induced by interferon. Guanylate binding proteins are characterized by their ability to specifically bind guanine nucleotides (GMP, GDP, and GTP) and are distinguished from the GTP-binding proteins by the presence of 2 binding motifs rather than 3.

## Recommended Dilutions

<b>WB</b>	1:500 - 1:1000
<b>IHC-P</b>	1:50 - 1:200

## Immunogen Information

### Gene ID

2633

### Swiss Prot

P32455

### Immunogen

A synthetic peptide corresponding to a sequence within amino acids 493-592 of human GBP1 (P32455).

### Synonyms

GBP1; guanylate-binding protein 1

## Contact

 | 400-999-6126

 | [cn.market@abclonal.com.cn](mailto:cn.market@abclonal.com.cn)

 | [www.abclonal.com.cn](http://www.abclonal.com.cn)

## Product Information

### Source

Rabbit

### Isotype

IgG

### Purification

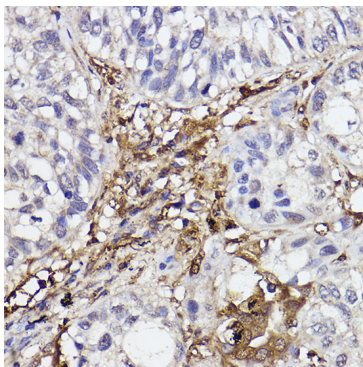
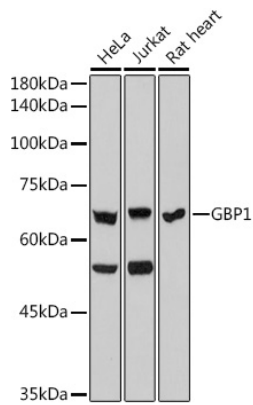
Affinity purification

### Storage

Store at -20°C. Avoid freeze / thaw cycles.

Buffer: PBS with 0.02% sodium azide, 0.05% BSA, 50% glycerol, pH7.3.

## Validation Data



Immunohistochemistry analysis of paraffin-embedded human lung cancer using GBP1 Rabbit mAb (A0570) at dilution of 1:100 (40x lens). Perform high pressure antigen retrieval with 10 mM citrate buffer pH 6.0 before commencing with IHC staining protocol.