

Slug Rabbit pAb

Catalog No.: A0572 **1 Publications**

Basic Information

Observed MW

32kDa

Calculated MW

30kDa

Category

Primary antibody

Applications

WB,IF/ICC

Cross-Reactivity

Human, Mouse, Rat

Background

This gene encodes a member of the Snail family of C2H2-type zinc finger transcription factors. The encoded protein acts as a transcriptional repressor that binds to E-box motifs and is also likely to repress E-cadherin transcription in breast carcinoma. This protein is involved in epithelial-mesenchymal transitions and has antiapoptotic activity. Mutations in this gene may be associated with sporadic cases of neural tube defects.

Recommended Dilutions

WB	1:500 - 1:1000
IF/ICC	1:20 - 1:50

Immunogen Information

Gene ID

6591

Swiss Prot

O43623

Immunogen

A synthetic Peptide of human SLUG

Synonyms

SLUG; WS2D; SLUGH; SLUGH1; SNAIL2; Slug

Contact

 | 400-999-6126

 | cn.market@abclonal.com.cn

 | www.abclonal.com.cn

Product Information

Source

Rabbit

Isotype

IgG

Purification

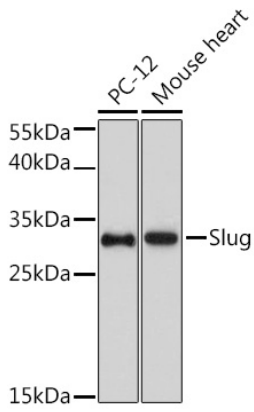
Affinity purification

Storage

Store at 4°C. Avoid freeze / thaw cycles.

Buffer: PBS with 0.02% sodium azide,pH7.3.

Validation Data



Western blot analysis of extracts of various cell lines, using Slug antibody (A0572).
Secondary antibody: HRP Goat Anti-Rabbit IgG (H+L) (AS014) at 1:10000 dilution.
Lysates/proteins: 25µg per lane.
Blocking buffer: 3% nonfat dry milk in TBST.