

# PEBP1 Rabbit pAb

**Catalog No.: A0578**

## Basic Information

**Observed MW**

21kDa

**Calculated MW**

21kDa

**Category**

Primary antibody

**Applications**

ELISA, WB, IF/ICC, IP

**Cross-Reactivity**

Human, Mouse, Rat

## Background

This gene encodes a member of the phosphatidylethanolamine-binding family of proteins and has been shown to modulate multiple signaling pathways, including the MAP kinase (MAPK), NF-kappa B, and glycogen synthase kinase-3 (GSK-3) signaling pathways. The encoded protein can be further processed to form a smaller cleavage product, hippocampal cholinergic neurostimulating peptide (HCNP), which may be involved in neural development. This gene has been implicated in numerous human cancers and may act as a metastasis suppressor gene. Multiple pseudogenes of this gene have been identified in the genome.

## Recommended Dilutions

**WB** 1:500 - 1:1000

**IF/ICC** 1:50 - 1:200

**IP** 0.5µg-4µg antibody for  
200µg-400µg extracts of  
whole cells

## Immunogen Information

**Gene ID**

5037

**Swiss Prot**

P30086

**Immunogen**

Recombinant fusion protein containing a sequence corresponding to amino acids 1-187 of human PEBP1 (NP\_002558.1).

**Synonyms**

PBP; HCNP; PEBP; RKIP; HCNppp; PEBP-1; HEL-210; HEL-S-34; HEL-S-96; PEBP1

## Contact

☎ | 400-999-6126

✉ | [cn.market@abclonal.com.cn](mailto:cn.market@abclonal.com.cn)

🌐 | [www.abclonal.com.cn](http://www.abclonal.com.cn)

## Product Information

**Source**

Rabbit

**Isotype**

IgG

**Purification**

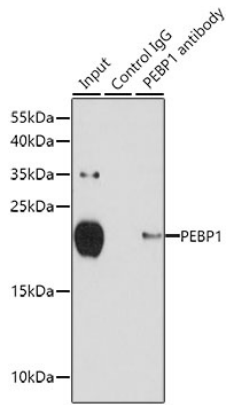
Affinity purification

**Storage**

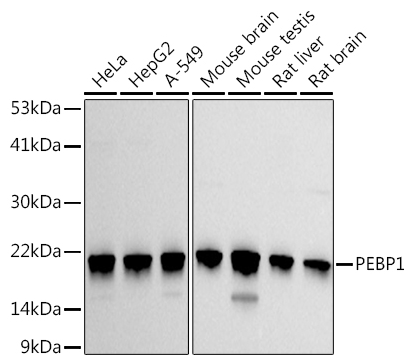
Store at -20°C. Avoid freeze / thaw cycles.

Buffer: PBS with 0.02% sodium azide, 50% glycerol, pH7.3.

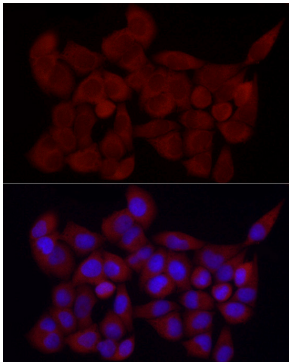
## Validation Data



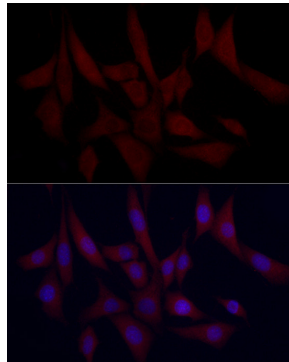
Immunoprecipitation analysis of 150 µg extracts of MCF-7 cells using 3 µg PEBP1 antibody (A0578). Western blot was performed from the immunoprecipitate using PEBP1 antibody (A0578) at a dilution of 1:500.



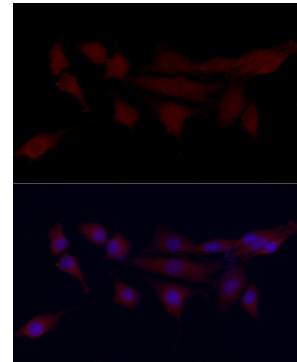
Western blot analysis of various lysates using PEBP1 Rabbit pAb (A0578) at 1:1000 dilution. Secondary antibody: HRP Goat Anti-Rabbit IgG (H+L) (AS014) at 1:10000 dilution. Lysates/proteins: 25µg per lane. Blocking buffer: 3% nonfat dry milk in TBST. Detection: ECL Basic Kit (RM00020). Exposure time: 30s.



Immunofluorescence analysis of HeLa cells using PEBP1 Rabbit pAb (A0578) at dilution of 1:25 (40x lens). Secondary antibody: Cy3 Goat Anti-Rabbit IgG (H+L) (AS007) at 1:500 dilution. Blue: DAPI for nuclear staining.



Immunofluorescence analysis of NIH/3T3 cells using PEBP1 Rabbit pAb (A0578) at dilution of 1:25 (40x lens). Secondary antibody: Cy3 Goat Anti-Rabbit IgG (H+L) (AS007) at 1:500 dilution. Blue: DAPI for nuclear staining.



Immunofluorescence analysis of PC-12 cells using PEBP1 Rabbit pAb (A0578) at dilution of 1:25 (40x lens). Secondary antibody: Cy3 Goat Anti-Rabbit IgG (H+L) (AS007) at 1:500 dilution. Blue: DAPI for nuclear staining.