

# Olig3 Rabbit mAb

Catalog No.: A0600 **Recombinant**

## Basic Information

### Observed MW

29kDa

### Calculated MW

29kDa

### Category

Primary antibody

### Applications

ELISA, WB

### Cross-Reactivity

Human

### CloneNo number

ARC2524

## Background

Enables sequence-specific double-stranded DNA binding activity. Predicted to be involved in neuron differentiation and regulation of transcription by RNA polymerase II. Predicted to act upstream of or within negative regulation of transcription by RNA polymerase II; spinal cord motor neuron cell fate specification; and spinal cord motor neuron migration. Predicted to be part of chromatin. Predicted to be active in nucleus.

## Recommended Dilutions

WB 1:500 - 1:1000

## Immunogen Information

### Gene ID

167826

### Swiss Prot

Q7RTU3

### Immunogen

A synthetic peptide corresponding to a sequence within amino acids 173-272 of human Olig3 (Q7RTU3).

### Synonyms

Bhlhb7; bHLHe20; Olig3

## Contact

☎ | 400-999-6126

✉ | [cn.market@abclonal.com.cn](mailto:cn.market@abclonal.com.cn)

🌐 | [www.abclonal.com.cn](http://www.abclonal.com.cn)

## Product Information

### Source

Rabbit

### Isotype

IgG

### Purification

Affinity purification

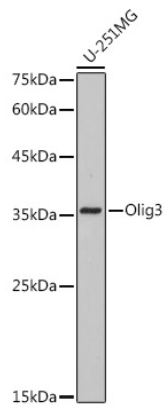
### Storage

Store at -20°C. Avoid freeze / thaw cycles.

Buffer: PBS with 0.02% sodium azide, 0.05% BSA, 50% glycerol, pH7.3.

## Validation Data

---



Western blot analysis of extracts of U-251 MG cells, using Olig3 antibody (A0600) at 1:1000 dilution.  
Secondary antibody: HRP Goat Anti-Rabbit IgG (H+L) (AS014) at 1:10000 dilution.  
Lysates/proteins: 25µg per lane.  
Blocking buffer: 3% nonfat dry milk in TBST.  
Detection: ECL Basic Kit (RM00020).  
Exposure time: 10s.