

CRMP3/DPYSL4 Rabbit mAb

Catalog No.: A0624 **Recombinant**

Basic Information

Observed MW

63kDa/62kDa

Calculated MW

62kDa

Category

Primary antibody

Applications

ELISA, WB

Cross-Reactivity

Rat

CloneNo number

ARC2530

Background

Enables filamin binding activity. Predicted to be involved in nervous system development. Predicted to be located in cytosol.

Recommended Dilutions

WB 1:1000 - 1:5000

Immunogen Information

Gene ID

10570

Swiss Prot

O14531

Immunogen

A synthetic peptide corresponding to a sequence within amino acids 1-100 of human CRMP3/DPYSL4 (O14531).

Synonyms

CRMP3; DRP-4; ULIP4; CRMP3/DPYSL4

Contact

 | 400-999-6126

 | cn.market@abclonal.com.cn

 | www.abclonal.com.cn

Product Information

Source

Rabbit

Isotype

IgG

Purification

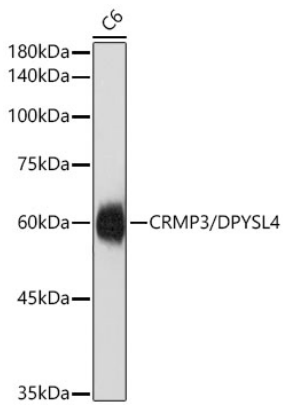
Affinity purification

Storage

Store at -20°C. Avoid freeze / thaw cycles.

Buffer: PBS with 0.02% sodium azide, 0.05% BSA, 50% glycerol, pH7.3.

Validation Data



Western blot analysis of lysates from C6 cells using CRMP3/DPYSL4 Rabbit mAb(A0624) at 1:5000 dilution.
Secondary antibody:HRP Goat Anti-Rabbit IgG (H+L)(AS014) at 1:10000 dilution.
Lysates/proteins: 25 µg per lane.
Blocking buffer: 3% nonfat dry milk in TBST.
Detection:ECL Basic Kit (RM00020).
Exposure time:1s.