

ELL Rabbit pAb

Catalog No.: A0668 **1 Publications**

Basic Information

Observed MW

68kDa

Calculated MW

68kDa

Category

Primary antibody

Applications

WB

Cross-Reactivity

Human, Mouse

Background

Enables phosphatase binding activity. Involved in positive regulation of transcription, DNA-templated and snRNA transcription. Located in cytosol; nuclear body; and transcriptionally active chromatin. Part of transcription elongation factor complex.

Recommended Dilutions

WB 1:200 - 1:500

Immunogen Information

Gene ID

8178

Swiss Prot

P55199

Immunogen

A synthetic peptide of human ELL

Synonyms

MEN; ELL1; PPP1R68; C19orf17; ELL

Contact

 | 400-999-6126

 | cn.market@abclonal.com.cn

 | www.abclonal.com.cn

Product Information

Source

Rabbit

Isotype

IgG

Purification

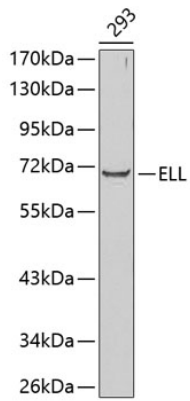
Affinity purification

Storage

Store at 4°C. Avoid freeze / thaw cycles.

Buffer: PBS with 0.02% sodium azide, pH7.3.

Validation Data



Western blot analysis of lysates from 293 cells, using ELL Rabbit pAb (A0668).
Secondary antibody: HRP-conjugated Goat anti-Rabbit IgG (H+L) (AS014) at 1:10000 dilution.
Lysates/proteins: 25µg per lane.
Blocking buffer: 3% nonfat dry milk in TBST.