

ATG13 Rabbit pAb

Catalog No.: A0690 **5 Publications**

Basic Information

Observed MW

72kDa

Calculated MW

57kDa

Category

Primary antibody

Applications

ELISA, WB, IF/ICC

Cross-Reactivity

Human, Mouse, Rat

Background

The protein encoded by this gene is an autophagy factor and a target of the TOR kinase signaling pathway. The encoded protein is essential for autophagosome formation and mitophagy.

Recommended Dilutions

WB	1:500 - 1:1000
IF/ICC	1:50 - 1:200

Immunogen Information

Gene ID

9776

Swiss Prot

O75143

Immunogen

Recombinant fusion protein containing a sequence corresponding to amino acids 281-480 of human ATG13 (NP_001136145.1).

Synonyms

KIAA0652; PARATARG8; ATG13

Contact

 | 400-999-6126

 | cn.market@abclonal.com.cn

 | www.abclonal.com.cn

Product Information

Source

Rabbit

Isotype

IgG

Purification

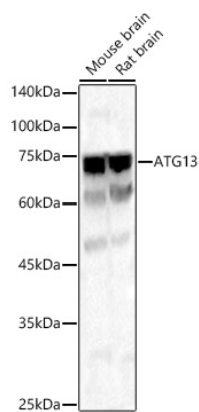
Affinity purification

Storage

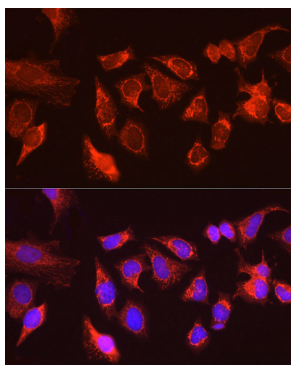
Store at -20°C. Avoid freeze / thaw cycles.

Buffer: PBS with 0.02% sodium azide, 50% glycerol, pH7.3.

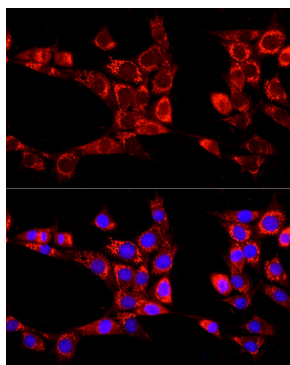
Validation Data



Western blot analysis of various lysates, using ATG13 antibody (A0690) at 1:1000 dilution.
Secondary antibody: HRP Goat Anti-Rabbit IgG (H+L) (AS014) at 1:10000 dilution.
Lysates/proteins: 25µg per lane.
Blocking buffer: 3% nonfat dry milk in TBST.
Detection: ECL Basic Kit (RM00020).
Exposure time: 25s.



Immunofluorescence analysis of HeLa cells using ATG13 Rabbit pAb (A0690) at dilution of 1:100 (40x lens). Blue: DAPI for nuclear staining.



Immunofluorescence analysis of NIH/3T3 cells using ATG13 Rabbit pAb (A0690) at dilution of 1:100 (40x lens). Blue: DAPI for nuclear staining.