

# ANGPT2 Rabbit pAb

Catalog No.: A0698 **4 Publications**

## Basic Information

### Observed MW

75kDa

### Calculated MW

57kDa

### Category

Primary antibody

### Applications

ELISA, WB, IF/ICC

### Cross-Reactivity

Human, Mouse, Rat

## Background

This gene belongs to the angiotensin family of growth factors. The protein encoded by this gene is an antagonist of angiotensin 1, and both angiotensin 1 and angiotensin 2 are ligands for the endothelial TEK receptor tyrosine kinase. Angiotensin 2 is upregulated in multiple inflammatory diseases and is implicated in the direct control of inflammation-related signaling pathways. The encoded protein affects angiogenesis during embryogenesis and tumorigenesis, disrupts the vascular remodeling ability of angiotensin 1, and may induce endothelial cell apoptosis. This gene serves a prognostic biomarker for acute respiratory distress syndrome.

## Recommended Dilutions

**WB** 1:500 - 1:2000

**IF/ICC** 1:50 - 1:200

## Immunogen Information

### Gene ID

285

### Swiss Prot

O15123

### Immunogen

Recombinant fusion protein containing a sequence corresponding to amino acids 197-496 of human ANGPT2 (NP\_001138.1).

### Synonyms

ANG2; AGPT2; LMPHM10; ANGPT2

## Contact

☎ | 400-999-6126

✉ | [cn.market@abclonal.com.cn](mailto:cn.market@abclonal.com.cn)

🌐 | [www.abclonal.com.cn](http://www.abclonal.com.cn)

## Product Information

### Source

Rabbit

### Isotype

IgG

### Purification

Affinity purification

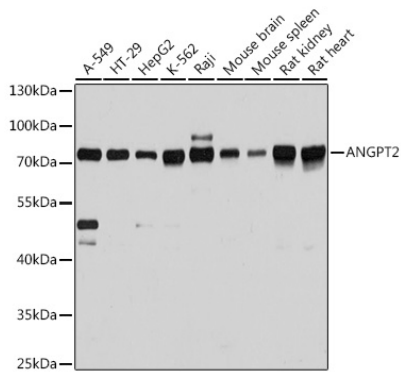
### Storage

Store at -20°C. Avoid freeze / thaw cycles.

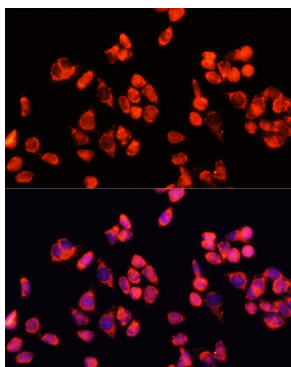
Buffer: PBS with 0.01% thimerosal, 50% glycerol, pH7.3.

## Validation Data

---



Western blot analysis of various lysates using ANGPT2 Rabbit pAb (A0698) at 1:3000 dilution. Secondary antibody: HRP Goat Anti-Rabbit IgG (H+L) (AS014) at 1:10000 dilution. Lysates/proteins: 25µg per lane. Blocking buffer: 3% nonfat dry milk in TBST. Detection: ECL Basic Kit (RM00020). Exposure time: 5s.



Immunofluorescence analysis of HeLa cells using ANGPT2 Rabbit pAb (A0698) at dilution of 1:100 (40x lens). Secondary antibody: Cy3 Goat Anti-Rabbit IgG (H+L) (AS007) at 1:500 dilution. Blue: DAPI for nuclear staining.