

Caspase-7 Rabbit pAb

Catalog No.: A0716

Basic Information

Observed MW

Refer to figures

Calculated MW

34kDa

Category

Primary antibody

Applications

ELISA, IHC-P, IP

Cross-Reactivity

Human, Rat

Background

This gene encodes a member of the cysteine-aspartic acid protease (caspase) family. Sequential activation of caspases plays a central role in the execution-phase of cell apoptosis. Caspases exist as inactive proenzymes which undergo proteolytic processing at conserved aspartic residues to produce two subunits, large and small, that dimerize to form the active enzyme. The precursor of the encoded protein is cleaved by caspase 3 and 10, is activated upon cell death stimuli and induces apoptosis. Alternatively spliced transcript variants encoding multiple isoforms have been observed for this gene.

Recommended Dilutions

IHC-P 1:50 - 1:100

IP 0.5µg-4µg antibody for
200µg-400µg extracts of
whole cells

Immunogen Information

Gene ID

840

Swiss Prot

P55210

Immunogen

Recombinant fusion protein containing a sequence corresponding to amino acids 24-303 of human Caspase-7 (NP_001218.1).

Synonyms

MCH3; CMH-1; LICE2; CASP-7; ICE-LAP3; Caspase-7

Contact

☎ | 400-999-6126

✉ | cn.market@abclonal.com.cn

🌐 | www.abclonal.com.cn

Product Information

Source

Rabbit

Isotype

IgG

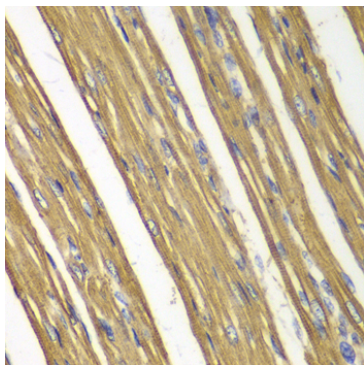
Purification

Affinity purification

Storage

Store at -20°C. Avoid freeze / thaw cycles.

Buffer: PBS with 0.02% sodium azide, 50% glycerol, pH7.3.



Immunohistochemistry analysis of Caspase-7 in paraffin-embedded rat heart using Caspase-7 Rabbit pAb (A0716) at dilution of 1:100 (40x lens). Perform microwave antigen retrieval with 10 mM PBS buffer pH 7.2 before commencing with IHC staining protocol.