

HMGB1 Rabbit pAb

Catalog No.: A0719 **1 Publications**

Basic Information

Observed MW

29kDa/

Calculated MW

25kDa

Category

Primary antibody

Applications

WB,IHC-P,(ELISA)

Cross-Reactivity

Human, Mouse, Rat

Background

This gene encodes a protein that belongs to the High Mobility Group-box superfamily. The encoded non-histone, nuclear DNA-binding protein regulates transcription, and is involved in organization of DNA. This protein plays a role in several cellular processes, including inflammation, cell differentiation and tumor cell migration. Multiple pseudogenes of this gene have been identified. Alternative splicing results in multiple transcript variants that encode the same protein.

Recommended Dilutions

WB 1:500 - 1:1000

IHC-P 1:50 - 1:100

ELISA Recommended starting concentration is 1 µg/mL. Please optimize the concentration based on your specific assay requirements.

Immunogen Information

Gene ID

3146

Swiss Prot

P09429

Immunogen

A synthetic peptide corresponding to a sequence within amino acids 69-168 of human HMGB1 (NP_002119.1).

Synonyms

HMG1; HMG3; HMG-1; SBP-1; HMGB1

Contact

☎ | 400-999-6126

✉ | cn.market@abclonal.com.cn

🌐 | www.abclonal.com.cn

Product Information

Source

Rabbit

Isotype

IgG

Purification

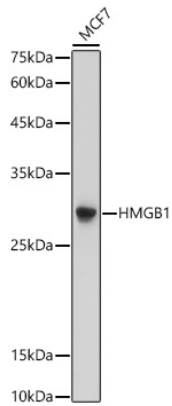
Affinity purification

Storage

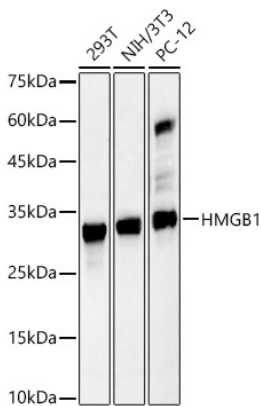
Store at -20°C. Avoid freeze / thaw cycles.

Buffer: PBS with 0.01% thimerosal, 50% glycerol, pH7.3.

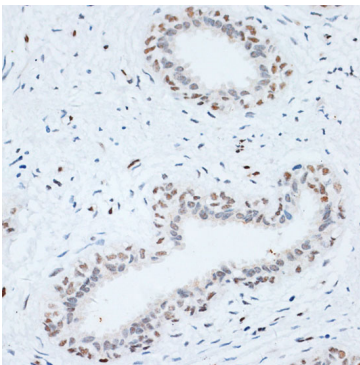
Validation Data



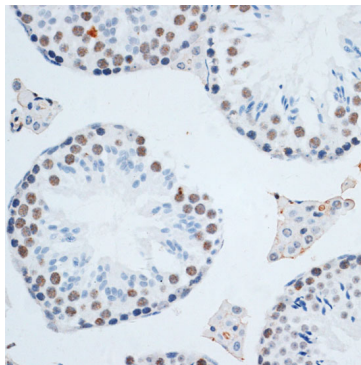
Western blot analysis of lysates from MCF7 cells using HMGB1 Rabbit pAb (A0719) at 1:1000 dilution incubated overnight at 4°C.
Secondary antibody: HRP-conjugated Goat anti-Rabbit IgG (H+L) (AS014) at 1:10000 dilution.
Lysates/proteins: 25 µg per lane.
Blocking buffer: 3% nonfat dry milk in TBST.
Detection: ECL Basic Kit (RM00020).
Exposure time: 10s.



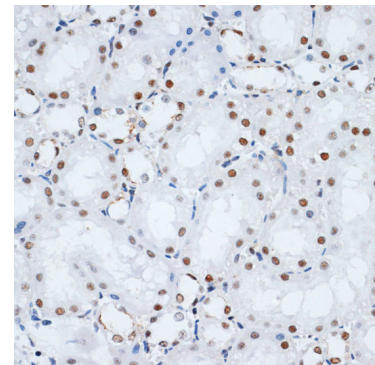
Western blot analysis of various lysates, using HMGB1 Rabbit pAb (A0719) at 1:400 dilution.
Secondary antibody: HRP-conjugated Goat anti-Rabbit IgG (H+L) (AS014) at 1:10000 dilution.
Lysates/proteins: 25µg per lane.
Blocking buffer: 3% nonfat dry milk in TBST.
Detection: ECL Basic Kit (RM00020).
Exposure time: 20s.



Immunohistochemistry analysis of paraffin-embedded Human breast cancer using HMGB1 Rabbit pAb (A0719) at dilution of 1:100 (40x lens). Microwave antigen retrieval performed with 0.01M PBS Buffer (pH 7.2) prior to IHC staining.



Immunohistochemistry analysis of paraffin-embedded Mouse testis using HMGB1 Rabbit pAb (A0719) at dilution of 1:100 (40x lens). Microwave antigen retrieval performed with 0.01M PBS Buffer (pH 7.2) prior to IHC staining.



Immunohistochemistry analysis of paraffin-embedded Rat kidney using HMGB1 Rabbit pAb (A0719) at dilution of 1:100 (40x lens). Microwave antigen retrieval performed with 0.01M PBS Buffer (pH 7.2) prior to IHC staining.