

[KD Validated] NF2 Rabbit pAb

Catalog No.: A0739

Basic Information

Observed MW

73kDa

Calculated MW

70kDa

Category

Primary antibody

Applications

ELISA, WB, IF/ICC, IP

Cross-Reactivity

Human, Mouse, Rat

Background

This gene encodes a protein that is similar to some members of the ERM (ezrin, radixin, moesin) family of proteins that link cytoskeletal components with proteins in the cell membrane. The encoded protein is involved in regulation of contact-dependent inhibition of cell proliferation and functions in cell-cell adhesion and transmembrane signaling. The encoded protein has been shown to interact with cell-surface proteins, proteins involved in cytoskeletal dynamics, and proteins involved in regulating ion transport. Disruption of this protein's function has been implicated in tumorigenesis and metastasis. Mutations in this gene are associated with neurofibromatosis type II which is characterized by nervous system and skin tumors and ocular abnormalities.

Recommended Dilutions

WB 1:500 - 1:2000**IF/ICC** 1:50 - 1:200**IP** 0.5µg-4µg antibody for
200µg-400µg extracts of
whole cells

Immunogen Information

Gene ID

4771

Swiss Prot

P35240

Immunogen

Recombinant fusion protein containing a sequence corresponding to amino acids 477-576 of human NF2 (NP_000259.1).

Synonyms

ACN; SCH; BANF; merlin-1; F2

Contact

 | 400-999-6126 | cn.market@abclonal.com.cn | www.abclonal.com.cn

Product Information

Source

Rabbit

Isotype

IgG

Purification

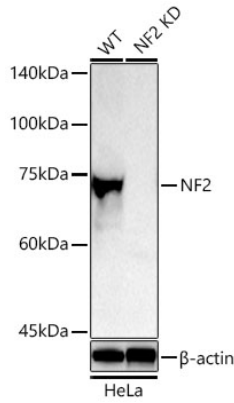
Affinity purification

Storage

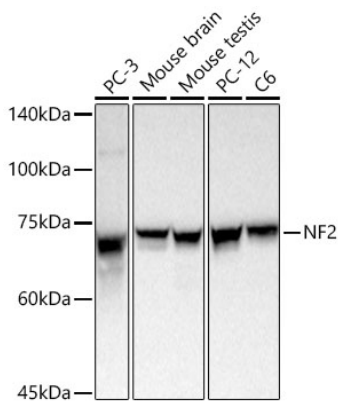
Store at -20°C. Avoid freeze / thaw cycles.

Buffer: PBS with 0.02% sodium azide, 50% glycerol, pH 7.3.

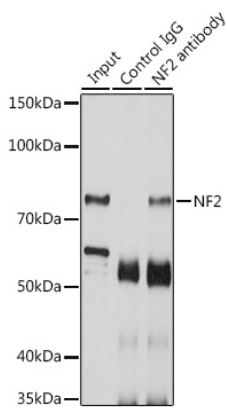
Validation Data



Western blot analysis of lysates from wild type (WT) and NF2 knockdown (KD) HeLa cells using [KD Validated] NF2 Rabbit pAb (A0739) at 1:1000 dilution incubated overnight at 4°C.
Secondary antibody: HRP-conjugated Goat anti-Rabbit IgG (H+L)(AS014) at 1:10000 dilution.
Lysates/proteins: 25 µg per lane.
Blocking buffer: 3% nonfat dry milk in TBST.
Detection: ECL Basic Kit (RM00020)
Exposure time: 180 s.

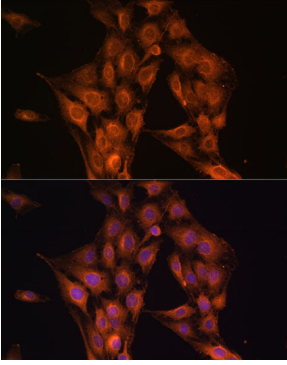


Western blot analysis of various lysates using [KD Validated] NF2 Rabbit pAb (A0739) at 1:1000 dilution incubated overnight at 4°C.
Secondary antibody: HRP-conjugated Goat anti-Rabbit IgG (H+L)(AS014) at 1:10000 dilution.
Lysates/proteins: 25 µg per lane.
Blocking buffer: 3% nonfat dry milk in TBST.
Detection: ECL Basic Kit (RM00020)
Exposure time: 30 s.

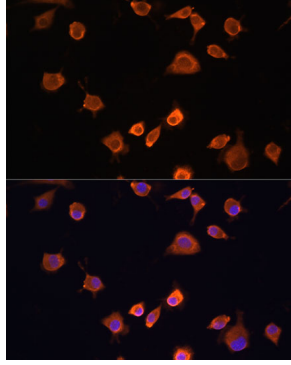


Immunoprecipitation analysis of 200 µg extracts of SKOV3 cells using 3 µg [KD Validated] NF2 Rabbit pAb (A0739). Western blot was performed from the immunoprecipitate using NF2 antibody (A0739) at a dilution of 1:1000.

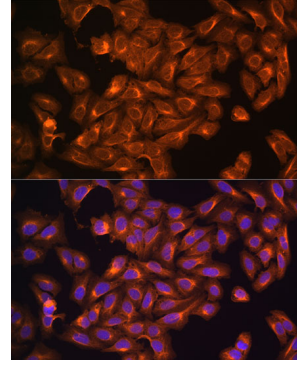
Validation Data



Immunofluorescence analysis of C6 cells using [KD Validated] NF2 Rabbit pAb (A0739) at dilution of 1:100. Blue: DAPI for nuclear staining.



Immunofluorescence analysis of L929 cells using [KD Validated] NF2 Rabbit pAb (A0739) at dilution of 1:100. Blue: DAPI for nuclear staining.



Immunofluorescence analysis of U2OS cells using [KD Validated] NF2 Rabbit pAb (A0739) at dilution of 1:100. Blue: DAPI for nuclear staining.