

# SBDS Rabbit mAb

Catalog No.: A0796

Recombinant

1 Publications

## Basic Information

### Observed MW

29kDa

### Calculated MW

29kDa

### Category

Primary antibody

### Applications

WB, ELISA

### Cross-Reactivity

Human, Mouse, Rat

### CloneNo number

ARC2539

## Background

This gene encodes a highly conserved protein that plays an essential role in ribosome biogenesis. The encoded protein interacts with elongation factor-like GTPase 1 to disassociate eukaryotic initiation factor 6 from the late cytoplasmic pre-60S ribosomal subunit allowing assembly of the 80S subunit. Mutations within this gene are associated with the autosomal recessive disorder Shwachman-Bodian-Diamond syndrome. This gene has a closely linked pseudogene that is distally located.

## Recommended Dilutions

**WB** 1:1000 - 1:5000

**ELISA** Recommended starting concentration is 1 µg/mL. Please optimize the concentration based on your specific assay requirements.

## Immunogen Information

### Gene ID

51119

### Swiss Prot

Q9Y3A5

### Immunogen

Synthetic peptide. This information is considered to be commercially sensitive.

### Synonyms

SDS; SDO1; SWDS; CGI-97; SBDS

## Contact

☎ | 400-999-6126

✉ | [cn.market@abclonal.com.cn](mailto:cn.market@abclonal.com.cn)

🌐 | [www.abclonal.com.cn](http://www.abclonal.com.cn)

## Product Information

### Source

Rabbit

### Isotype

IgG

### Purification

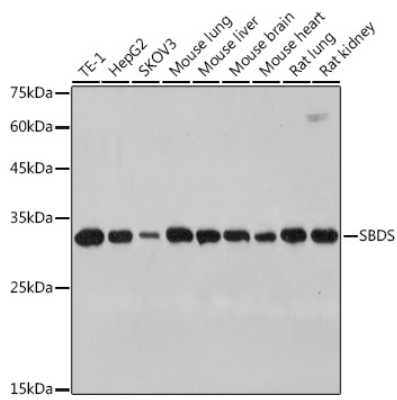
Affinity purification

### Storage

Store at -20°C. Avoid freeze / thaw cycles.

Buffer: PBS with 0.02% sodium azide, 0.05% BSA, 50% glycerol, pH7.3.

Validation Data



Western blot analysis of various lysates using SBDS Rabbit mAb (A0796) at 1:1000 dilution.  
Secondary antibody: HRP-conjugated Goat anti-Rabbit IgG (H+L) (AS014) at 1:10000 dilution.  
Lysates/proteins: 25µg per lane.  
Blocking buffer: 3% nonfat dry milk in TBST.  
Detection: ECL Basic Kit (RM00020).  
Exposure time: 5s.