

# Collagen III alpha 1/COL3A1 Rabbit mAb

Catalog No.: A0817 **Recombinant** **26 Publications**

## Basic Information

### Observed MW

150kDa

### Calculated MW

139kDa

### Category

Primary antibody

### Applications

WB,IP,ELISA

### Cross-Reactivity

Human, Mouse, Rat

### CloneNo number

ARC2542

## Background

This gene encodes the pro-alpha1 chains of type III collagen, a fibrillar collagen that is found in extensible connective tissues such as skin, lung, uterus, intestine and the vascular system, frequently in association with type I collagen. Mutations in this gene are associated with Ehlers-Danlos syndrome type IV, and with aortic and arterial aneurysms.

## Recommended Dilutions

**WB** 1:1000 - 1:6000

**IP** 0.5µg-4µg antibody for  
200µg-400µg extracts of  
whole cells

**ELISA** Recommended starting  
concentration is 1 µg/mL.  
Please optimize the  
concentration based on  
your specific assay  
requirements.

## Immunogen Information

### Gene ID

1281

### Swiss Prot

P02461

### Immunogen

Recombinant protein (or fragment). This information is considered to be commercially sensitive.

### Synonyms

EDS4A; EDSVASC; PMGEDSV; Collagen III alpha 1/COL3A1

## Contact

☎ | 400-999-6126

✉ | [cn.market@abclonal.com.cn](mailto:cn.market@abclonal.com.cn)

🌐 | [www.abclonal.com.cn](http://www.abclonal.com.cn)

## Product Information

### Source

Rabbit

### Isotype

IgG

### Purification

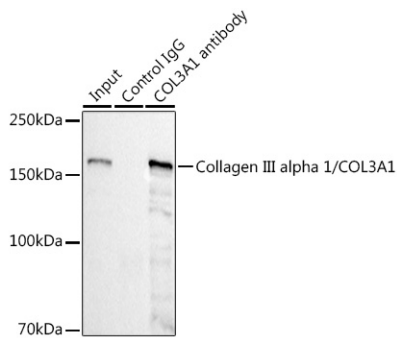
Affinity purification

### Storage

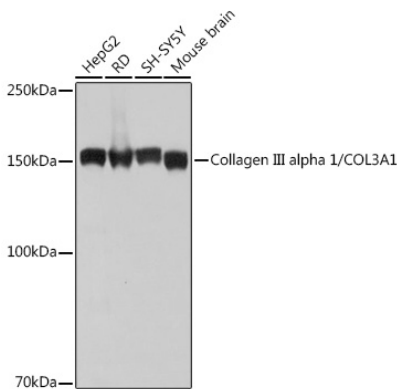
Store at -20°C. Avoid freeze / thaw cycles.

Buffer: PBS with 0.09% Sodium azide, 0.05% BSA, 50% glycerol, pH7.3.

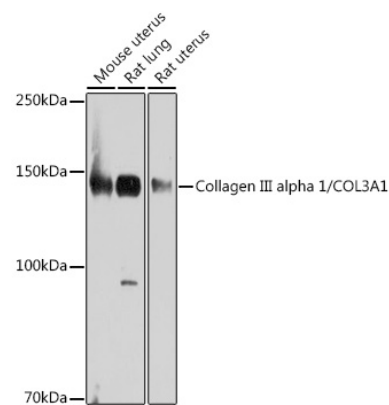
Validation Data



Immunoprecipitation analysis of 300 µg extracts from HepG2 cells using 3 µg Collagen III alpha 1/COL3A1 Rabbit mAb (A0817). Western blot was performed from the immunoprecipitate using Collagen III alpha 1/COL3A1 Rabbit mAb (A0817) at a dilution of 1:1000.



Western blot analysis of various lysates using Collagen III alpha 1/COL3A1 Rabbit mAb (A0817) at 1:1000 dilution.  
Secondary antibody: HRP-conjugated Goat anti-Rabbit IgG (H+L) (AS014) at 1:10000 dilution.  
Lysates/proteins: 25µg per lane.  
Blocking buffer: 3% nonfat dry milk in TBST.  
Detection: ECL Basic Kit (RM00020).  
Exposure time: 1s.



Western blot analysis of various lysates using Collagen III alpha 1/COL3A1 Rabbit mAb (A0817) at 1:1000 dilution.  
Secondary antibody: HRP-conjugated Goat anti-Rabbit IgG (H+L) (AS014) at 1:10000 dilution.  
Lysates/proteins: 25µg per lane.  
Blocking buffer: 3% nonfat dry milk in TBST.  
Detection: ECL Basic Kit (RM00020).  
Exposure time: 60s.