

Integrin alpha 5 (ITGA5/CD49e) Rabbit pAb

Catalog No.: A0832 **1 Publications**

Basic Information

Observed MW

147kDa

Calculated MW

115kDa

Category

Primary antibody

Applications

WB

Cross-Reactivity

Human

Background

The product of this gene belongs to the integrin alpha chain family. Integrins are heterodimeric integral membrane proteins composed of an alpha subunit and a beta subunit that function in cell surface adhesion and signaling. The encoded preproprotein is proteolytically processed to generate light and heavy chains that comprise the alpha 5 subunit. This subunit associates with the beta 1 subunit to form a fibronectin receptor. This integrin may promote tumor invasion, and higher expression of this gene may be correlated with shorter survival time in lung cancer patients. Note that the integrin alpha 5 and integrin alpha V subunits are encoded by distinct genes.

Recommended Dilutions

WB 1:500 - 1:1000

Immunogen Information

Gene ID

3678

Swiss Prot

P08648

Immunogen

A synthetic peptide of human Integrin alpha 5 (ITGA5/CD49e)

Synonyms

FNRA; CD49e; VLA-5; VLA5A; Integrin alpha 5 (ITGA5/CD49e)

Contact

 | 400-999-6126 | cn.market@abclonal.com.cn | www.abclonal.com.cn

Product Information

Source

Rabbit

Isotype

IgG

Purification

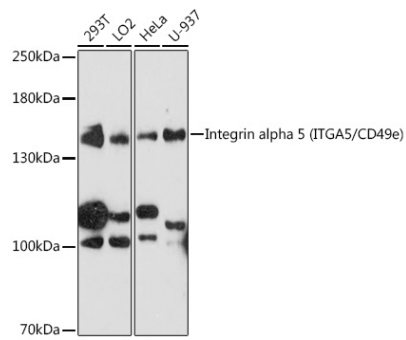
Affinity purification

Storage

Store at 4°C. Avoid freeze / thaw cycles.

Buffer: PBS with 0.02% sodium azide, pH7.3.

Validation Data



Western blot analysis of various lysates using Integrin alpha 5 (ITGA5/CD49e) Rabbit pAb (A0832) at 1:1000 dilution.
Secondary antibody: HRP-conjugated Goat anti-Rabbit IgG (H+L) (AS014) at 1:10000 dilution.
Lysates/proteins: 25µg per lane.
Blocking buffer: 3% nonfat dry milk in TBST.
Detection: ECL Basic Kit (RM00020).
Exposure time: 90s.