

# [KO Validated] TRAF6 Rabbit pAb

Catalog No.: A0973SP **KO Validated** **25 Publications**

## Basic Information

### Observed MW

63 kDa

### Calculated MW

60 kDa

### Category

Primary antibody

### Applications

WB,IP,IHC-P,ELISA

### Cross-Reactivity

Human, Mouse, Rat

## Background

The protein encoded by this gene is a member of the TNF receptor associated factor (TRAF) protein family. TRAF proteins are associated with, and mediate signal transduction from, members of the TNF receptor superfamily. This protein has an amino terminal RING domain which is followed by four zinc-finger motifs, a central coiled-coil region and a highly conserved carboxyl terminal domain, known as the TRAF-C domain and mediates signaling from members of the TNF receptor superfamily as well as the Toll/IL-1 family. Signals from receptors such as CD40, TNFSF11/RANCE and IL-1 have been shown to be mediated by this protein. This protein also interacts with various protein kinases including IRAK1/IRAK, SRC and PKCzeta, which provides a link between distinct signaling pathways. This protein functions as a signal transducer in the NF-kappaB pathway that activates IkkappaB kinase (IKK) in response to proinflammatory cytokines. The interaction of this protein with UBE2N/UBC13, and UBE2V1/UEV1A, which are ubiquitin conjugating enzymes catalyzing the formation of polyubiquitin chains, has been found to be required for IKK activation by this protein. This protein also interacts with the transforming growth factor (TGF) beta receptor complex and is required for Smad-independent activation of the JNK and p38 kinases. The protein encoded by this gene is a key molecule in antiviral innate and antigen-specific immune responses.

## Recommended Dilutions

**WB** 1:10000 - 1:20000

**IP** 0.5 µg - 4 µg antibody for  
200 µg - 400 µg extracts  
of whole cells

**IHC-P** 1:500 - 1:2000

**ELISA** Recommended starting concentration is 1 µg/mL. Please optimize the concentration based on your specific assay requirements. For high-ratio antibody dilutions ( $\geq 1:10000$ ) a sequential dilution method is strongly recommended to ensure measurement accuracy.

## Immunogen Information

### Gene ID

7189

### Swiss Prot

Q9Y4K3

### Immunogen

This information is considered to be commercially sensitive.

### Synonyms

RNF85; MGC:3310; TRAF6

## Product Information

### Source

Rabbit

### Isotype

IgG

### Purification

Affinity purification

### Storage

Store at -20°C. Avoid freeze / thaw cycles.

Buffer: PBS, pH 7.3, containing 50% glycerol. Preserved with Proclin300 or sodium azide. May contain 0.05% BSA as specified on the Certificate of Analysis.

## Contact

---

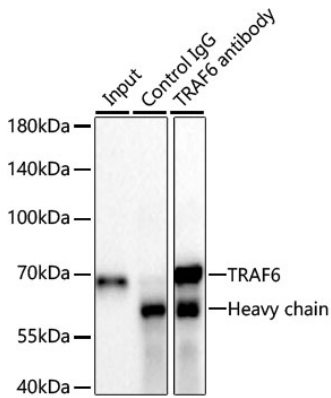
 | 400-999-6126

 | [cn.market@abclonal.com.cn](mailto:cn.market@abclonal.com.cn)

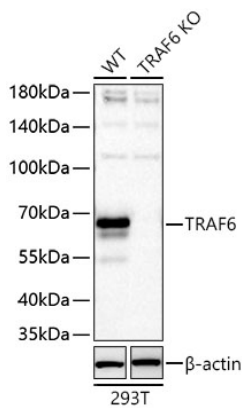
 | [www.abclonal.com.cn](http://www.abclonal.com.cn)

---

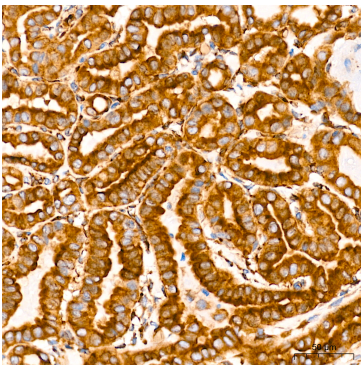
## Validation Data



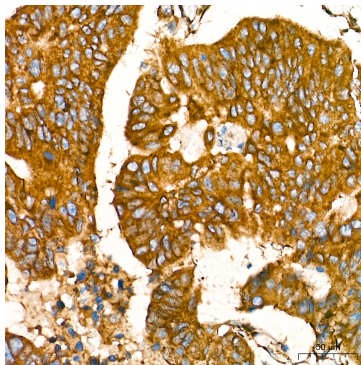
Immunoprecipitation of TRAF6 from 300  $\mu$ g extracts of RAW 264.7 cells was performed using 2  $\mu$ g of [KO Validated] TRAF6 Rabbit pAb (A0973SP). Rabbit IgG isotype control (AC005) was used to precipitate the Control IgG sample. IP samples were eluted with 1x reducing Laemmli Buffer. The Input lane represents 10% of the total input. Western blot analysis of immunoprecipitates was conducted using [KO Validated] TRAF6 Rabbit pAb (A0973SP) at a dilution of 1:5000.



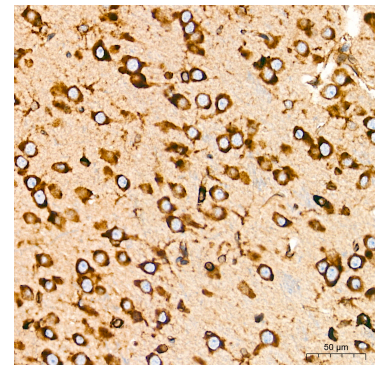
Western blot analysis of lysates from wild type (WT) and TRAF6 knockout (KO) 293T cells using [KO Validated] TRAF6 Rabbit pAb (A0973SP) at 1:15000 dilution incubated at room temperature for 1.5 hours. Secondary antibody: HRP-conjugated Goat anti-Rabbit IgG (H+L) (AS014) at 1:10000 dilution. Lysates/proteins: 25  $\mu$ g per lane. Blocking buffer: 3% nonfat dry milk in TBST. Detection: ECL Basic Kit (RM00020). Exposure time: 45 s.



Immunohistochemistry analysis of paraffin-embedded Human thyroid cancer tissue using [KO Validated] TRAF6 Rabbit pAb (A0973SP) at a dilution of 1:1500 (40x lens). High pressure antigen retrieval performed with 0.01M Tris-EDTA Buffer (pH 9.0) prior to IHC staining.



Immunohistochemistry analysis of paraffin-embedded Human colon carcinoma tissue using [KO Validated] TRAF6 Rabbit pAb (A0973SP) at a dilution of 1:1500 (40x lens). High pressure antigen retrieval performed with 0.01M Tris-EDTA Buffer (pH 9.0) prior to IHC staining.



Immunohistochemistry analysis of paraffin-embedded Rat brain tissue using [KO Validated] TRAF6 Rabbit pAb (A0973SP) at a dilution of 1:1500 (40x lens). High pressure antigen retrieval performed with 0.01M Tris-EDTA Buffer (pH 9.0) prior to IHC staining.