

SYT1 Rabbit pAb

Catalog No.: A0992

7 Publications

Basic Information

Observed MW

60kDa

Calculated MW

48kDa

Category

Primary antibody

Applications

ELISA, WB, IF/ICC

Cross-Reactivity

Human, Mouse, Rat

Background

This gene encodes a member of the synaptotagmin protein family. The synaptotagmins are integral membrane proteins of synaptic vesicles that serve as calcium sensors in the process of vesicular trafficking and exocytosis. The encoded protein participates in triggering neurotransmitter release at the synapse in response to calcium binding. Mutations in this gene are associated with Baker-Gordon syndrome.

Recommended Dilutions

WB 1:500 - 1:1000

IF/ICC 1:50 - 1:200

Immunogen Information

Gene ID

6857

Swiss Prot

P21579

Immunogen

Recombinant fusion protein containing a sequence corresponding to amino acids 84-157 of human SYT1 (NP_005630.1).

Synonyms

P65; SYT; BAGOS; SVP65; SYT1

Contact

☎ | 400-999-6126

✉ | cn.market@abclonal.com.cn

🌐 | www.abclonal.com.cn

Product Information

Source

Rabbit

Isotype

IgG

Purification

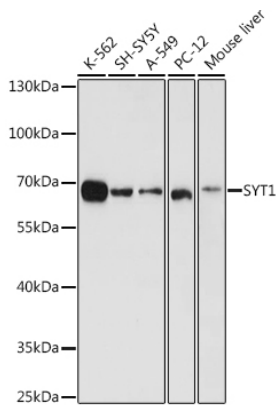
Affinity purification

Storage

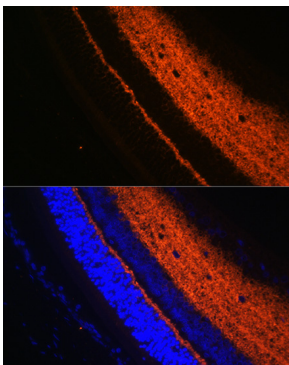
Store at -20°C. Avoid freeze / thaw cycles.

Buffer: PBS with 0.01% thimerosal, 50% glycerol, pH7.3.

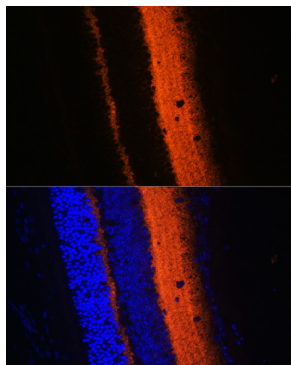
Validation Data



Western blot analysis of extracts of various cell lines, using SYT1 antibody (A0992) at 1:1000 dilution. Secondary antibody: HRP Goat Anti-Rabbit IgG (H+L) (AS014) at 1:10000 dilution. Lysates/proteins: 25µg per lane. Blocking buffer: 3% nonfat dry milk in TBST. Detection: ECL Basic Kit (RM00020). Exposure time: 10s.



Immunofluorescence analysis of rat eye using SYT1 Rabbit pAb (A0992) at dilution of 1:100 (40x lens). Blue: DAPI for nuclear staining.



Immunofluorescence analysis of mouse eye using SYT1 Rabbit pAb (A0992) at dilution of 1:100 (40x lens). Blue: DAPI for nuclear staining.