

Cyclin H Rabbit pAb

Catalog No.: A0995

Basic Information

Observed MW

36kDa/

Calculated MW

38kDa

Category

Primary antibody

Applications

WB,IP,ELISA

Cross-Reactivity

Human

Background

The protein encoded by this gene belongs to the highly conserved cyclin family, whose members are characterized by a dramatic periodicity in protein abundance through the cell cycle. Cyclins function as regulators of CDK kinases. Different cyclins exhibit distinct expression and degradation patterns which contribute to the temporal coordination of each mitotic event. This cyclin forms a complex with CDK7 kinase and ring finger protein MAT1. The kinase complex is able to phosphorylate CDK2 and CDC2 kinases, thus functions as a CDK-activating kinase (CAK). This cyclin and its kinase partner are components of TFIIF, as well as RNA polymerase II protein complexes. They participate in two different transcriptional regulation processes, suggesting an important link between basal transcription control and the cell cycle machinery. A pseudogene of this gene is found on chromosome 4. Alternate splicing results in multiple transcript variants.

Recommended Dilutions

WB 1:500 - 1:2000**IP** 0.5µg-4µg antibody for
200µg-400µg extracts of
whole cells**ELISA** Recommended starting
concentration is 1 µg/mL.
Please optimize the
concentration based on
your specific assay
requirements.

Immunogen Information

Gene ID

902

Swiss Prot

P51946

Immunogen

Recombinant protein (or fragment). This information is considered to be commercially sensitive.

Synonyms

CAK; p34; p37; Cych; Cyclin H

Contact

 | 400-999-6126 | cn.market@abclonal.com.cn | www.abclonal.com.cn

Product Information

Source

Rabbit

Isotype

IgG

Purification

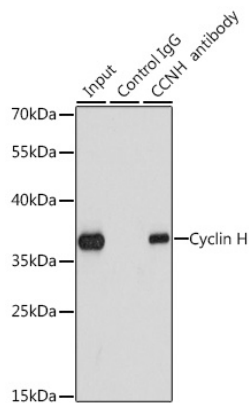
Affinity purification

Storage

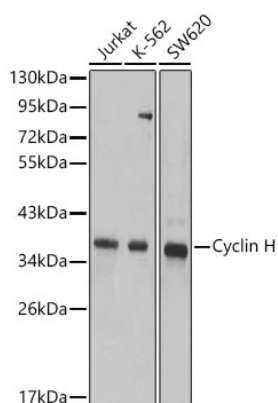
Store at -20°C. Avoid freeze / thaw cycles.

Buffer: PBS containing 50% glycerol, preserved with proclin300 or sodium azide (as specified on the Certificate of Analysis), pH 7.3.

Validation Data



Immunoprecipitation analysis of 200 μ g extracts of K562 cells using 1 μ g Cyclin H antibody (A0995). Western blot was performed from the immunoprecipitate using Cyclin H antibody (A0995) at a dilution of 1:1000.



Western blot analysis of various lysates using Cyclin H Rabbit pAb (A0995) at 1:1000 dilution. Secondary antibody: HRP-conjugated Goat anti-Rabbit IgG (H+L) (AS014) at 1:10000 dilution. Lysates / proteins: 25 μ g per lane. Blocking buffer: 3 % nonfat dry milk in TBST. Detection: ECL Basic Kit (RM00020). Exposure time: 90s.