

# GEN1 Rabbit pAb

**Catalog No.: A10001**

## Basic Information

### Observed MW

103kDa

### Calculated MW

103kDa

### Category

Primary antibody

### Applications

ELISA, WB

### Cross-Reactivity

Human, Mouse

## Background

This gene encodes a member of the Rad2/xeroderma pigmentosum group G nuclease family, whose members are characterized by N-terminal and internal xeroderma pigmentosum group G nuclease domains followed by helix-hairpin-helix domains and disordered C-terminal domains. The protein encoded by this gene is involved in resolution of Holliday junctions, which are intermediate four-way structures that covalently link DNA during homologous recombination and double-strand break repair. The protein resolves Holliday junctions by creating dual incisions across the junction to produce nicked duplex products that can be ligated. In addition, this protein has been found to localize to centrosomes where it has been implicated in regulation of centrosome integrity. Alternative splicing results in multiple transcript variants.

## Recommended Dilutions

**WB** 1:500 - 1:2000

## Immunogen Information

### Gene ID

348654

### Swiss Prot

Q17RS7

### Immunogen

Recombinant fusion protein containing a sequence corresponding to amino acids 669-908 of human GEN1 (NP\_872431.3).

### Synonyms

Gen; GEN1

## Contact

☎ | 400-999-6126

✉ | [cn.market@abclonal.com.cn](mailto:cn.market@abclonal.com.cn)

🌐 | [www.abclonal.com.cn](http://www.abclonal.com.cn)

## Product Information

### Source

Rabbit

### Isotype

IgG

### Purification

Affinity purification

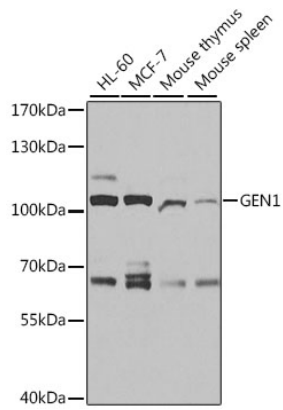
### Storage

Store at -20°C. Avoid freeze / thaw cycles.

Buffer: PBS with 0.02% sodium azide, 50% glycerol, pH7.3.

## Validation Data

---



Western blot analysis of extracts of various cell lines, using GEN1 antibody (A10001) at 1:1000 dilution.  
Secondary antibody: HRP Goat Anti-Rabbit IgG (H+L) (AS014) at 1:10000 dilution.  
Lysates/proteins: 25 $\mu$ g per lane.  
Blocking buffer: 3% nonfat dry milk in TBST.  
Detection: ECL Basic Kit (RM00020).  
Exposure time: 30s.