

# RPRM Rabbit pAb

Catalog No.: A10013

## Basic Information

### Observed MW

20kDa

### Calculated MW

12kDa

### Category

Primary antibody

### Applications

ELISA, WB

### Cross-Reactivity

Mouse

## Background

Predicted to be involved in regulation of mitotic cell cycle. Predicted to act upstream of or within regulation of cell cycle. Predicted to be integral component of membrane. Predicted to be active in cytoplasm.

## Recommended Dilutions

WB 1:500 - 1:2000

## Immunogen Information

### Gene ID

56475

### Swiss Prot

Q9NS64

### Immunogen

Recombinant fusion protein containing a sequence corresponding to amino acids 1-109 of human RPRM (NP\_062819.1).

### Synonyms

REPRIMO; RPRM

## Contact

 | 400-999-6126

 | [cn.market@abclonal.com.cn](mailto:cn.market@abclonal.com.cn)

 | [www.abclonal.com.cn](http://www.abclonal.com.cn)

## Product Information

### Source

Rabbit

### Isotype

IgG

### Purification

Affinity purification

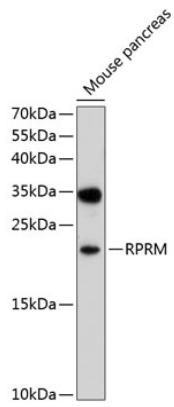
### Storage

Store at -20°C. Avoid freeze / thaw cycles.

Buffer: PBS with 0.02% sodium azide, 50% glycerol, pH 7.3.

## Validation Data

---



Western blot analysis of extracts of mouse pancreas, using RPRM antibody (A10013) at 1:1000 dilution.  
Secondary antibody: HRP Goat Anti-Rabbit IgG (H+L) (AS014) at 1:10000 dilution.  
Lysates/proteins: 25 $\mu$ g per lane.  
Blocking buffer: 3% nonfat dry milk in TBST.  
Detection: ECL Basic Kit (RM00020).  
Exposure time: 30s.