

EFEMP2 Rabbit pAb

Catalog No.: A10018

Basic Information

Observed MW

55kDa

Calculated MW

49kDa

Category

Primary antibody

Applications

ELISA, WB

Cross-Reactivity

Human

Background

A large number of extracellular matrix proteins have been found to contain variations of the epidermal growth factor (EGF) domain and have been implicated in functions as diverse as blood coagulation, activation of complement and determination of cell fate during development. The protein encoded by this gene contains four EGF2 domains and six calcium-binding EGF2 domains. This gene is necessary for elastic fiber formation and connective tissue development. Defects in this gene are cause of an autosomal recessive cutis laxa syndrome. Alternatively spliced transcript variants have been identified for this gene.

Recommended Dilutions

WB 1:500 - 1:1000

Immunogen Information

Gene ID

30008

Swiss Prot

O95967

Immunogen

Recombinant fusion protein containing a sequence corresponding to amino acids 26-250 of human EFEMP2 (NP_058634.4).

Synonyms

MBP1; UPH1; FBLN4; ARCL1B; EFEMP2

Contact

☎ | 400-999-6126

✉ | cn.market@abclonal.com.cn

🌐 | www.abclonal.com.cn

Product Information

Source

Rabbit

Isotype

IgG

Purification

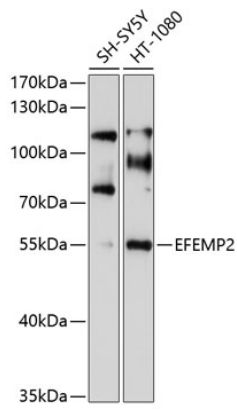
Affinity purification

Storage

Store at -20°C. Avoid freeze / thaw cycles.

Buffer: PBS with 0.02% sodium azide, 50% glycerol, pH7.3.

Validation Data



Western blot analysis of extracts of various cell lines, using EFEMP2 antibody (A10018) at 1:1000 dilution.
Secondary antibody: HRP Goat Anti-Rabbit IgG (H+L) (AS014) at 1:10000 dilution.
Lysates/proteins: 25µg per lane.
Blocking buffer: 3% nonfat dry milk in TBST.
Detection: ECL Enhanced Kit (RM00021).
Exposure time: 90s.