

# YAP1 Rabbit pAb

Catalog No.: A1002SP **55 Publications**

## Basic Information

### Observed MW

75 kDa

### Calculated MW

36-54 kDa

### Category

Primary antibody

### Applications

WB,IP,IF/ICC,IHC-P,ELISA

### Cross-Reactivity

Human, Mouse

## Background

This gene encodes a downstream nuclear effector of the Hippo signaling pathway which is involved in development, growth, repair, and homeostasis. This gene is known to play a role in the development and progression of multiple cancers as a transcriptional regulator of this signaling pathway and may function as a potential target for cancer treatment. Alternative splicing results in multiple transcript variants encoding different isoforms.

## Recommended Dilutions

**WB** 1:1000 - 1:3000

**IP** 0.5µg-4µg antibody for  
200µg-400µg extracts of  
whole cells

**IF/ICC** 1:100 - 1:300

**IHC-P** 1:200 - 1:800

**ELISA** Recommended starting concentration is 1 µg/mL. Please optimize the concentration based on your specific assay requirements. For high-ratio antibody dilutions (≥1:10000) a sequential dilution method is strongly recommended to ensure measurement accuracy.

## Immunogen Information

### Gene ID

10413/22601

### Swiss Prot

P46937/P46938

### Immunogen

This information is considered to be commercially sensitive.

### Synonyms

YAP; YKI; COB1; YAP2; YAP-1; YAP65; YAP1

## Product Information

### Source

Rabbit

### Isotype

IgG

### Purification

Affinity purification

### Storage

Store at -20°C. Avoid freeze / thaw cycles.

Buffer: PBS, pH 7.3, containing 50% glycerol. Preserved with Proclin300 or sodium azide. May contain 0.05% BSA as specified on the Certificate of Analysis.

## Contact

---

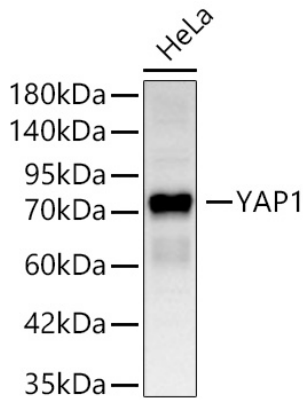
 | 400-999-6126

 | [cn.market@abclonal.com.cn](mailto:cn.market@abclonal.com.cn)

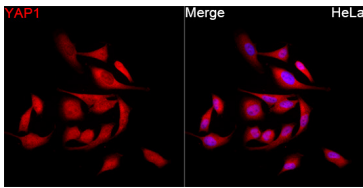
 | [www.abclonal.com.cn](http://www.abclonal.com.cn)

---

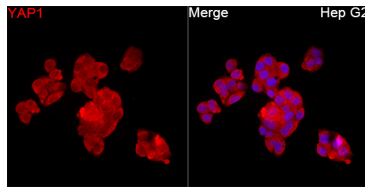
## Validation Data



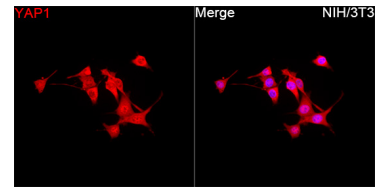
Western blot analysis of lysates from HeLa cells using YAP1 Rabbit pAb (A1002SP) at 1:2000 dilution incubated overnight at 4°C.  
 Secondary antibody: HRP-conjugated Goat anti-Rabbit IgG (H+L) (AS014) at 1:10000 dilution.  
 Lysates/proteins: 25 µg per lane.  
 Blocking buffer: 3% nonfat dry milk in TBST.  
 Detection: ECL Basic Kit (RM00020).  
 Exposure time: 30 s.



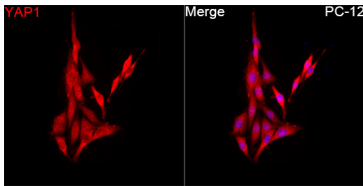
Immunofluorescence analysis of HeLa cells using YAP1 Rabbit pAb (A1002SP) at a dilution of 1:250 (40x lens). Secondary antibody: Cy3-conjugated Goat anti-Rabbit IgG (H+L) (AS007) at 1:500 dilution. Blue: DAPI for nuclear staining.



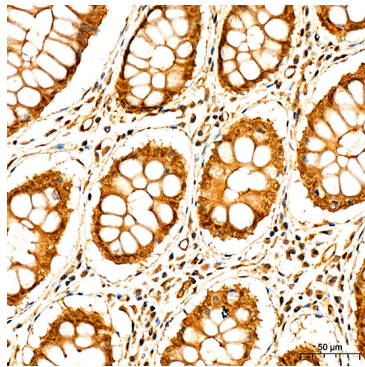
Immunofluorescence analysis of Hep G2 cells using YAP1 Rabbit pAb (A1002SP) at a dilution of 1:1:250 (40x lens). Secondary antibody: Cy3-conjugated Goat anti-Rabbit IgG (H+L) (AS007) at 1:500 dilution. Blue: DAPI for nuclear staining.



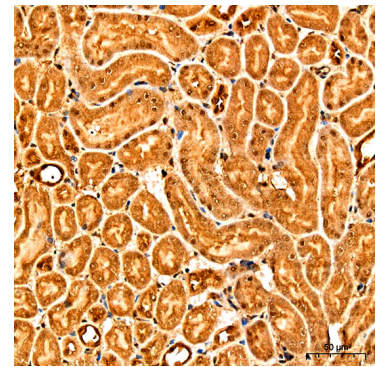
Immunofluorescence analysis of NIH/3T3 cells using YAP1 Rabbit pAb (A1002SP) at a dilution of 1:100 (40x lens). Secondary antibody: Cy3-conjugated Goat anti-Rabbit IgG (H+L) (AS007) at 1:500 dilution. Blue: DAPI for nuclear staining.



Immunofluorescence analysis of PC-12 cells using YAP1 Rabbit pAb (A1002SP) at a dilution of 1:1:250 (40x lens). Secondary antibody: Cy3-conjugated Goat anti-Rabbit IgG (H+L) (AS007) at 1:500 dilution. Blue: DAPI for nuclear staining.



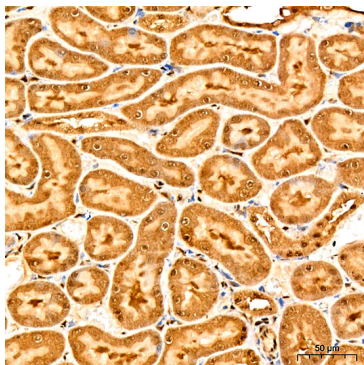
Immunohistochemistry analysis of paraffin-embedded Human colon carcinoma tissue using YAP1 Rabbit pAb (A1002SP) at a dilution of 1:250 (40x lens). High pressure antigen retrieval performed with 0.01M Citrate Buffer (pH 6.0) prior to IHC staining.



Immunohistochemistry analysis of paraffin-embedded Mouse kidney tissue using YAP1 Rabbit pAb (A1002SP) at a dilution of 1:250 (40x lens). High pressure antigen retrieval performed with 0.01M Citrate Buffer (pH 6.0) prior to IHC staining.

## Validation Data

---



Immunohistochemistry analysis of paraffin-embedded Rat kidney tissue using YAP1 Rabbit pAb (A1002SP) at a dilution of 1:250 (40x lens). High pressure antigen retrieval performed with 0.01M Citrate Buffer (pH 6.0) prior to IHC staining.