

[KO Validated] UBE2O Rabbit pAb

Catalog No.: A10036 **KO** Validated

Basic Information

Observed MW

200kDa

Calculated MW

141kDa

Category

Primary antibody

Applications

WB, IF/ICC, IP, ELISA

Cross-Reactivity

Human, Mouse, Rat

Background

Enables ubiquitin conjugating enzyme activity and ubiquitin protein ligase activity. Involved in positive regulation of BMP signaling pathway; protein ubiquitination; and retrograde transport, endosome to Golgi. Located in cytoplasm and nuclear body.

Recommended Dilutions

WB 1:1000 - 1:4000

IF/ICC 1:50 - 1:200

IP 0.5µg-4µg antibody for
200µg-400µg extracts of
whole cells

ELISA Recommended starting
concentration is 1 µg/mL.
Please optimize the
concentration based on
your specific assay
requirements.

Immunogen Information

Gene ID

63893

Swiss Prot

Q9C0C9

Immunogen

Recombinant protein (or fragment). This information is considered to be commercially sensitive.

Synonyms

E2-230K; 20

Contact

 | 400-999-6126

 | cn.market@abclonal.com.cn

 | www.abclonal.com.cn

Product Information

Source

Rabbit

Isotype

IgG

Purification

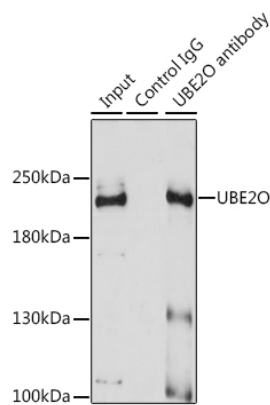
Affinity purification

Storage

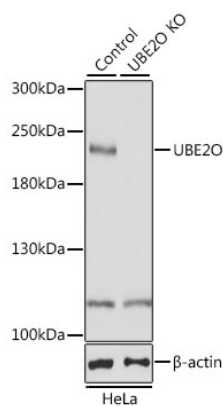
Store at -20°C. Avoid freeze / thaw cycles.

Buffer: PBS containing 50% glycerol, preserved with proclin300 or sodium azide (as specified on the Certificate of Analysis), pH 7.3.

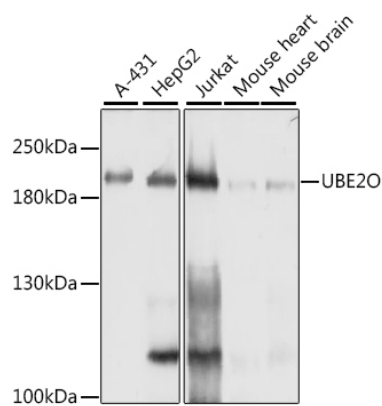
Validation Data



Immunoprecipitation analysis of 200 µg extracts of A-431 cells using 3 µg UBE2O antibody (A10036). Western blot was performed from the immunoprecipitate using UBE2O antibody (A10036) at a dilution of 1:1000.

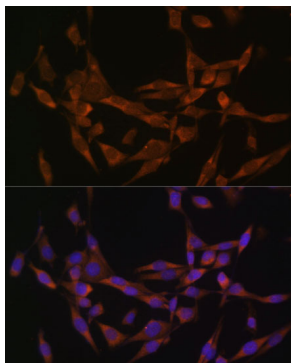


Western blot analysis of lysates from wild type (WT) and UBE2O knockout (KO) HeLa cells, using [KO Validated] UBE2O Rabbit pAb (A10036) at 1:1000 dilution. Secondary antibody: HRP-conjugated Goat anti-Rabbit IgG (H+L) (AS014) at 1:10000 dilution. Lysates/proteins: 25µg per lane. Blocking buffer: 3% nonfat dry milk in TBST. Detection: ECL Basic Kit (RM00020). Exposure time: 5s.



Western blot analysis of various lysates using [KO Validated] UBE2O Rabbit pAb (A10036) at 1:1000 dilution. Secondary antibody: HRP-conjugated Goat anti-Rabbit IgG (H+L) (AS014) at 1:10000 dilution. Lysates/proteins: 25µg per lane. Blocking buffer: 3% nonfat dry milk in TBST. Detection: ECL Basic Kit (RM00020). Exposure time: 1s.

Validation Data



Immunofluorescence analysis of HeLa cells using [KO Validated] UBE2O Rabbit pAb (A10036) at dilution of 1:100 (40x lens). Secondary antibody: Cy3-conjugated Goat anti-Rabbit IgG (H+L) (AS007) at 1:500 dilution. Blue: DAPI for nuclear staining.