

NRXN1 Rabbit pAb

Catalog No.: A10066 **2 Publications**

Basic Information

Observed MW

162kDa

Calculated MW

15kDa/46kDa/161kDa/164kDa/169kDa

Category

Primary antibody

Applications

ELISA, WB

Cross-Reactivity

Human, Mouse

Background

This gene encodes a single-pass type I membrane protein that belongs to the neurexin family. Neurexins are cell-surface receptors that bind neuroligins to form Ca(2+)-dependent neurexin/neuroligin complexes at synapses in the central nervous system. This complex is required for efficient neurotransmission and is involved in the formation of synaptic contacts. Three members of this gene family have been studied in detail and are estimated to generate over 3,000 variants through the use of two alternative promoters (alpha and beta) and extensive alternative splicing in each family member. Recently, a third promoter (gamma) was identified for this gene in the 3' region. Mutations in this gene are associated with Pitt-Hopkins-like syndrome-2 and may contribute to susceptibility to schizophrenia.

Recommended Dilutions

WB 1:500 - 1:2000

Immunogen Information

Gene ID

9378

Swiss Prot

P58400/Q9ULB1

Immunogen

Recombinant fusion protein containing a sequence corresponding to amino acids 31-310 of human NRXN1 (NP_001129131.1).

Synonyms

PTHSL2; SCZD17; Hs.22998; NRXN1

Contact

☎ | 400-999-6126

✉ | cn.market@abclonal.com.cn

🌐 | www.abclonal.com.cn

Product Information

Source

Rabbit

Isotype

IgG

Purification

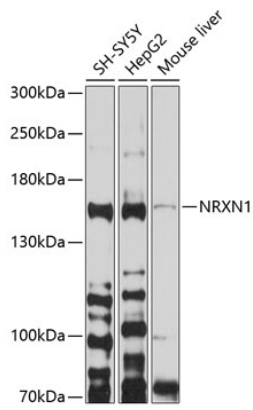
Affinity purification

Storage

Store at -20°C. Avoid freeze / thaw cycles.

Buffer: PBS with 0.02% sodium azide, 50% glycerol, pH7.3.

Validation Data



Western blot analysis of extracts of various cell lines, using NRXN1 antibody (A10066) at 1:1000 dilution.
Secondary antibody: HRP Goat Anti-Rabbit IgG (H+L) (AS014) at 1:10000 dilution.
Lysates/proteins: 25µg per lane.
Blocking buffer: 3% nonfat dry milk in TBST.
Detection: ECL Basic Kit (RM00020).
Exposure time: 90s.