

ROBO2 Rabbit pAb

Catalog No.: A10070

Basic Information

Observed MW

175kDa

Calculated MW

151kDa

Category

Primary antibody

Applications

ELISA, WB

Cross-Reactivity

Human, Mouse, Rat

Background

The protein encoded by this gene belongs to the ROBO family, part of the immunoglobulin superfamily of proteins that are highly conserved from fly to human. The encoded protein is a transmembrane receptor for the slit homolog 2 protein and functions in axon guidance and cell migration. Mutations in this gene are associated with vesicoureteral reflux, characterized by the backward flow of urine from the bladder into the ureters or the kidney. Alternative splicing results in multiple transcript variants.

Recommended Dilutions

WB 1:500 - 1:2000

Immunogen Information

Gene ID

6092

Swiss Prot

Q9HCK4

Immunogen

Recombinant fusion protein containing a sequence corresponding to amino acids 450-660 of human ROBO2 (NP_001122401.1).

Synonyms

SAX3; ROBO2

Contact

☎ | 400-999-6126

✉ | cn.market@abclonal.com.cn

🌐 | www.abclonal.com.cn

Product Information

Source

Rabbit

Isotype

IgG

Purification

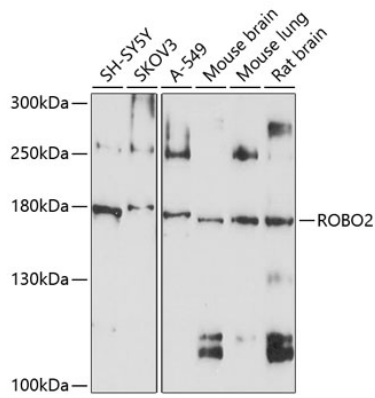
Affinity purification

Storage

Store at -20°C. Avoid freeze / thaw cycles.

Buffer: PBS with 0.02% sodium azide, 50% glycerol, pH 7.3.

Validation Data



Western blot analysis of extracts of various cell lines, using ROBO2 antibody (A10070) at 1:1000 dilution. Secondary antibody: HRP Goat Anti-Rabbit IgG (H+L) (AS014) at 1:10000 dilution. Lysates/proteins: 25µg per lane. Blocking buffer: 3% nonfat dry milk in TBST. Detection: ECL Enhanced Kit (RM00021). Exposure time: 90s.