

TRPM7 Rabbit pAb

Catalog No.: A10075

Basic Information

Observed MW

230kDa

Calculated MW

213kDa

Category

Primary antibody

Applications

ELISA, WB

Cross-Reactivity

Mouse

Background

This gene belongs to the melastatin subfamily of transient receptor potential family of ion channels. The protein encoded by this gene is both an ion channel and a serine/threonine protein kinase. The kinase activity is essential for the ion channel function, which serves to increase intracellular calcium levels and to help regulate magnesium ion homeostasis. The encoded protein is involved in cytoskeletal organization, cell adhesion, cell migration and organogenesis. Defects in this gene are a cause of amyotrophic lateral sclerosis-parkinsonism/dementia complex of Guam. The gene may also be associated with defects of cardiac function.

Recommended Dilutions

WB 1:500 - 1:2000

Immunogen Information

Gene ID

54822

Swiss Prot

Q96QT4

Immunogen

Recombinant fusion protein containing a sequence corresponding to amino acids 756-855 of human TRPM7 (NP_060142.3).

Synonyms

CHAK; CHAK1; ALSPDC; LTRPC7; LTrpC-7; TRP-PLIK; TRPM7

Contact

☎ | 400-999-6126

✉ | cn.market@abclonal.com.cn

🌐 | www.abclonal.com.cn

Product Information

Source

Rabbit

Isotype

IgG

Purification

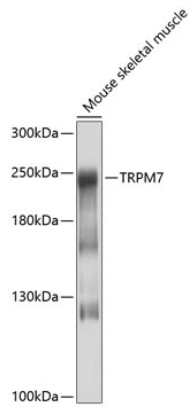
Affinity purification

Storage

Store at -20°C. Avoid freeze / thaw cycles.

Buffer: PBS with 0.02% sodium azide, 50% glycerol, pH 7.3.

Validation Data



Western blot analysis of extracts of mouse skeletal muscle, using TRPM7 antibody (A10075) at 1:1000 dilution.

Secondary antibody: HRP Goat Anti-Rabbit IgG (H+L) (AS014) at 1:10000 dilution.

Lysates/proteins: 25µg per lane.

Blocking buffer: 3% nonfat dry milk in TBST.

Detection: ECL Basic Kit (RM00020).

Exposure time: 10s.