

DAG1 Rabbit pAb

Catalog No.: A10076 **1 Publications**

Basic Information

Observed MW

43kDa

Calculated MW

97kDa

Category

Primary antibody

Applications

WB,IF/ICC,IP,ELISA

Cross-Reactivity

Human, Mouse, Rat

Background

This gene encodes dystroglycan, a central component of dystrophin-glycoprotein complex that links the extracellular matrix and the cytoskeleton in the skeletal muscle. The encoded preproprotein undergoes O- and N-glycosylation, and proteolytic processing to generate alpha and beta subunits. Certain mutations in this gene are known to cause distinct forms of muscular dystrophy. Alternative splicing results in multiple transcript variants, all encoding the same protein.

Recommended Dilutions

WB 1:1000 - 1:5000

IF/ICC 1:20 - 1:100

IP 0.5µg-4µg antibody for 200µg-400µg extracts of whole cells

ELISA Recommended starting concentration is 1 µg/mL. Please optimize the concentration based on your specific assay requirements.

Immunogen Information

Gene ID

1605

Swiss Prot

Q14118

Immunogen

Recombinant fusion protein containing a sequence corresponding to amino acids 776-895 of human DAG1 (NP_001171108.1).

Synonyms

A3a; DAG; AGRNR; 156DAG; MDDGA9; MDDGC7; MDDGC9; LGMDR16; DAG1

Contact

☎ | 400-999-6126

✉ | cn.market@abclonal.com.cn

🌐 | www.abclonal.com.cn

Product Information

Source

Rabbit

Isotype

IgG

Purification

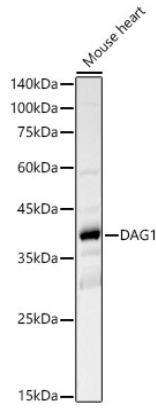
Affinity purification

Storage

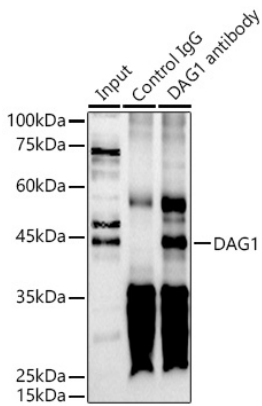
Store at -20°C. Avoid freeze / thaw cycles.

Buffer: PBS with 0.02% sodium azide,50% glycerol,pH7.3.

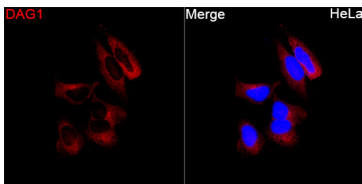
Validation Data



Western blot analysis of lysates from Mouse heart, using DAG1 Rabbit pAb (A10076) at 1:2000 dilution. Secondary antibody: HRP-conjugated Goat anti-Rabbit IgG (H+L) (AS014) at 1:10000 dilution. Lysates/proteins: 25µg per lane. Blocking buffer: 3% nonfat dry milk in TBST. Detection: ECL Basic Kit (RM00020). Exposure time: 180s.



Immunoprecipitation analysis of 300 µg extracts of HeLa cells using 3 µg DAG1 antibody (A10076). Western blot was performed from the immunoprecipitate using DAG1 antibody (A10076) at a dilution of 1:1000.



Immunofluorescence analysis of HeLa cells using DAG1 Rabbit pAb(A10076) at a dilution of 1:200 (40x lens). Secondary antibody: Cy3 Goat Anti-Rabbit IgG (H+L)(AS007) at 1:500 dilution. Blue: DAPI for nuclear staining.