

RPRD1B Rabbit pAb

Catalog No.: A10102

Basic Information

Observed MW

37kDa

Calculated MW

37kDa

Category

Primary antibody

Applications

ELISA, WB, IHC-P

Cross-Reactivity

Human, Mouse, Rat

Background

Enables RNA polymerase II complex binding activity and identical protein binding activity. Involved in positive regulation of cell population proliferation; regulation of cell cycle process; and regulation of transcription by RNA polymerase II. Located in nucleoplasm. Part of RNA polymerase II, holoenzyme.

Recommended Dilutions

WB 1:500 - 1:2000

IHC-P 1:100 - 1:200

Immunogen Information

Gene ID

58490

Swiss Prot

Q9NQG5

Immunogen

Recombinant fusion protein containing a sequence corresponding to amino acids 80-326 of human rprd1b (Q9NQG5).

Synonyms

K-H; CREPT; NET60; C20orf77; Kub5-Hera; dj1057B20.2; RPRD1B

Contact

☎ | 400-999-6126

✉ | cn.market@abclonal.com.cn

🌐 | www.abclonal.com.cn

Product Information

Source

Rabbit

Isotype

IgG

Purification

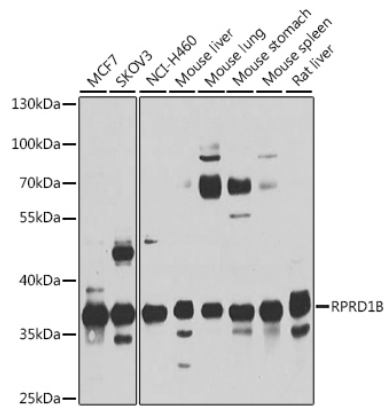
Affinity purification

Storage

Store at -20°C. Avoid freeze / thaw cycles.

Buffer: PBS with 0.02% sodium azide, 50% glycerol, pH7.3.

Validation Data



Western blot analysis of extracts of various cell lines, using rprd1b antibody (A10102) at 1:1000 dilution.
Secondary antibody: HRP Goat Anti-Rabbit IgG (H+L) (AS014) at 1:10000 dilution.
Lysates/proteins: 25µg per lane.
Blocking buffer: 3% nonfat dry milk in TBST.
Detection: ECL Basic Kit (RM00020).
Exposure time: 15s.