

ZP2 Rabbit pAb

Catalog No.: A10126 **7 Publications**

Basic Information

Observed MW

68kDa

Calculated MW

82kDa

Category

Primary antibody

Applications

ELISA, WB, IF/ICC

Cross-Reactivity

Human, Mouse, Rat

Background

The zona pellucida is an extracellular matrix that surrounds the oocyte and early embryo. It is composed of three glycoproteins with various functions during fertilization and preimplantation development. The glycosylated mature peptide is one of the structural components of the zona pellucida and functions in secondary binding and penetration of acrosome-reacted spermatozoa. Female mice lacking this gene do not form a stable zona matrix and are sterile. Alternative splicing results in multiple transcript variants.

Recommended Dilutions

| | |
|---------------|-----------------|
| WB | 1:1000 - 1:4000 |
| IF/ICC | 1:50 - 1:200 |

Immunogen Information

Gene ID

7783

Swiss Prot

Q05996

Immunogen

Recombinant fusion protein containing a sequence corresponding to amino acids 651-745 of human ZP2 (NP_003451.1).

Synonyms

ZPA; Zp-2; OOMD6; OZEMA6; ZP2

Contact

| | |
|--|--|
|  | 400-999-6126 |
|  | cn.market@abclonal.com.cn |
|  | www.abclonal.com.cn |

Product Information

Source

Rabbit

Isotype

IgG

Purification

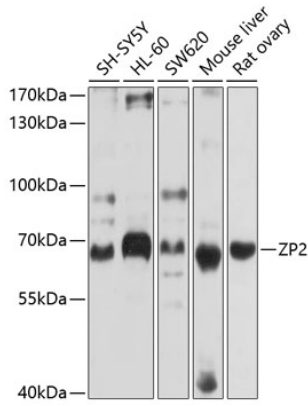
Affinity purification

Storage

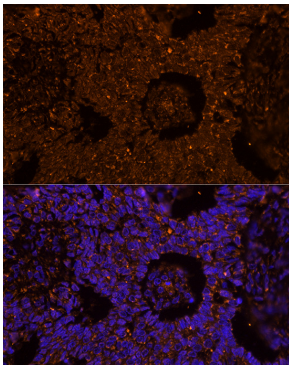
Store at -20°C. Avoid freeze / thaw cycles.

Buffer: PBS with 0.02% sodium azide, 50% glycerol, pH7.3.

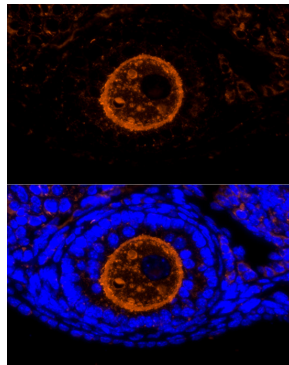
Validation Data



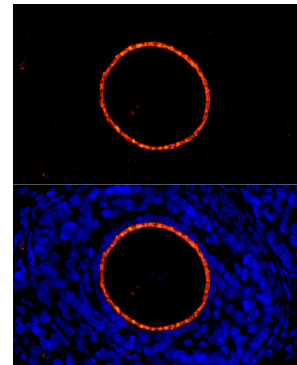
Western blot analysis of extracts of various cell lines, using ZP2 antibody (A10126) at 1:1000 dilution. Secondary antibody: HRP Goat Anti-Rabbit IgG (H+L) (AS014) at 1:10000 dilution. Lysates/proteins: 25µg per lane. Blocking buffer: 3% nonfat dry milk in TBST. Detection: ECL Basic Kit (RM00020). Exposure time: 10s.



Immunofluorescence analysis of Human ovarian cancer cells using ZP2 Rabbit pAb (A10126) at dilution of 1:100 (40x lens). Blue: DAPI for nuclear staining.



Immunofluorescence analysis of mouse ovary cells using ZP2 Rabbit pAb (A10126) at dilution of 1:100 (40x lens). Blue: DAPI for nuclear staining.



Immunofluorescence analysis of rat ovary cells using ZP2 Rabbit pAb (A10126) at dilution of 1:100 (40x lens). Blue: DAPI for nuclear staining.