

TMPRSS11D Rabbit pAb

Catalog No.: A10132

Basic Information

Observed MW

46kDa

Calculated MW

46kDa

Category

Primary antibody

Applications

ELISA, WB

Cross-Reactivity

Human, Mouse, Rat

Background

This gene encodes a trypsin-like serine protease released from the submucosal serous glands onto mucous membrane. It is a type II integral membrane protein and has 29-38% identity in the sequence of the catalytic region with human hepsin, enteropeptidase, acrosin, and mast cell tryptase. The noncatalytic region has little similarity to other known proteins. This protein may play some biological role in the host defense system on the mucous membrane independently of or in cooperation with other substances in airway mucous or bronchial secretions. This protein facilitates entry of viruses into host cells by proteolytically cleaving and activating viral envelope glycoproteins.

Recommended Dilutions

WB 1:500 - 1:2000

Immunogen Information

Gene ID

9407

Swiss Prot

O60235

Immunogen

Recombinant fusion protein containing a sequence corresponding to amino acids 42-292 of human TMPRSS11D (NP_004253.1).

Synonyms

ASP; HAT; TMPRSS11D

Contact

☎ | 400-999-6126

✉ | cn.market@abclonal.com.cn

🌐 | www.abclonal.com.cn

Product Information

Source

Rabbit

Isotype

IgG

Purification

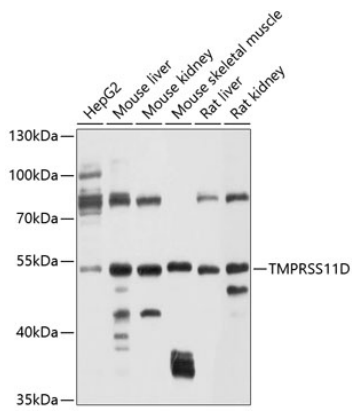
Affinity purification

Storage

Store at -20°C. Avoid freeze / thaw cycles.

Buffer: PBS with 0.02% sodium azide, 50% glycerol, pH7.3.

Validation Data



Western blot analysis of extracts of various cell lines, using TMPRSS11D antibody (A10132) at 1:1000 dilution.

Secondary antibody: HRP Goat Anti-Rabbit IgG (H+L) (AS014) at 1:10000 dilution.

Lysates/proteins: 25µg per lane.

Blocking buffer: 3% nonfat dry milk in TBST.

Detection: ECL Basic Kit (RM00020).

Exposure time: 30s.