

SEMA4D Rabbit pAb

Catalog No.: A10136 **2 Publications**

Basic Information

Observed MW

150kDa

Calculated MW

96kDa

Category

Primary antibody

Applications

ELISA, WB

Cross-Reactivity

Human

Background

Enables identical protein binding activity; semaphorin receptor binding activity; and transmembrane signaling receptor activity. Involved in several processes, including positive regulation of phosphatidylinositol 3-kinase signaling; regulation of neuron projection development; and regulation of phosphate metabolic process. Is integral component of plasma membrane.

Recommended Dilutions

WB 1:200 - 1:1000

Immunogen Information

Gene ID

10507

Swiss Prot

Q92854

Immunogen

Recombinant fusion protein containing a sequence corresponding to amino acids 753-862 of human SEMA4D (NP_006369.3).

Synonyms

A8; GR3; BB18; CD100; COLL4; SEMAJ; coll-4; C9orf164; M-sema-G; SEMA4D

Contact

 | 400-999-6126

 | cn.market@abclonal.com.cn

 | www.abclonal.com.cn

Product Information

Source

Rabbit

Isotype

IgG

Purification

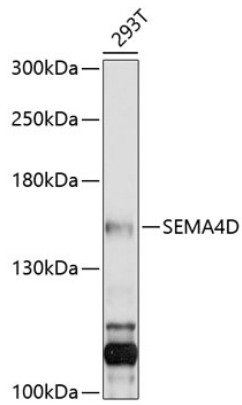
Affinity purification

Storage

Store at -20°C. Avoid freeze / thaw cycles.

Buffer: PBS with 0.02% sodium azide, 50% glycerol, pH7.3.

Validation Data



Western blot analysis of lysates from 293T cells, using SEMA4D Rabbit pAb (A10136) at 1:1000 dilution.
Secondary antibody: HRP Goat Anti-Rabbit IgG (H+L) (AS014) at 1:10000 dilution.
Lysates/proteins: 25µg per lane.
Blocking buffer: 3% nonfat dry milk in TBST.
Detection: ECL Enhanced Kit (RM00021).
Exposure time: 10s.