

# SMG6 Rabbit pAb

Catalog No.: A10141 **2 Publications**

## Basic Information

### Observed MW

210kDa

### Calculated MW

160kDa

### Category

Primary antibody

### Applications

ELISA, WB

### Cross-Reactivity

Human, Rat

## Background

This gene encodes a component of the telomerase ribonucleoprotein complex responsible for the replication and maintenance of chromosome ends. The encoded protein also plays a role in the nonsense-mediated mRNA decay (NMD) pathway, providing the endonuclease activity near the premature translation termination codon that is needed to initiate NMD. Alternatively spliced transcript variants encoding distinct protein isoforms have been described.

## Recommended Dilutions

WB 1:500 - 1:2000

## Immunogen Information

### Gene ID

23293

### Swiss Prot

Q86US8

### Immunogen

Recombinant fusion protein containing a sequence corresponding to amino acids 1160-1419 of human SMG6 (NP\_060045.4).

### Synonyms

EST1A; SMG-6; hEST1A; C17orf31; hSMG5/7a; SMG6

## Contact

 | 400-999-6126

 | [cn.market@abclonal.com.cn](mailto:cn.market@abclonal.com.cn)

 | [www.abclonal.com.cn](http://www.abclonal.com.cn)

## Product Information

### Source

Rabbit

### Isotype

IgG

### Purification

Affinity purification

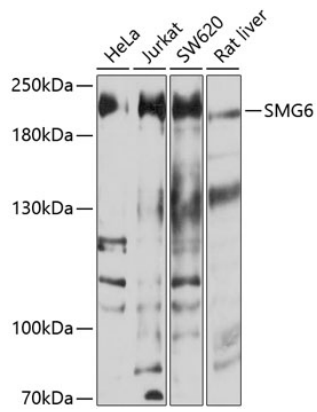
### Storage

Store at -20°C. Avoid freeze / thaw cycles.

Buffer: PBS with 0.02% sodium azide, 50% glycerol, pH 7.3.

## Validation Data

---



Western blot analysis of extracts of various cell lines, using SMG6 antibody (A10141) at 1:1000 dilution.  
Secondary antibody: HRP Goat Anti-Rabbit IgG (H+L) (AS014) at 1:10000 dilution.  
Lysates/proteins: 25µg per lane.  
Blocking buffer: 3% nonfat dry milk in TBST.  
Detection: ECL Basic Kit (RM00020).  
Exposure time: 30s.