

MESP1 Rabbit pAb

Catalog No.: A10148

Basic Information

Observed MW

20kDa

Calculated MW

29kDa

Category

Primary antibody

Applications

ELISA, WB, IHC-P

Cross-Reactivity

Human, Mouse, Rat

Background

Enables DNA-binding transcription factor activity and transcription cis-regulatory region binding activity. Involved in several processes, including endothelial cell differentiation; heart development; and positive regulation of transcription by RNA polymerase II. Predicted to be part of chromatin. Predicted to be active in nucleus.

Recommended Dilutions

WB 1:200 - 1:1000

IHC-P 1:500 - 1:1000

Immunogen Information

Gene ID

55897

Swiss Prot

Q9BRJ9

Immunogen

Recombinant fusion protein containing a sequence corresponding to amino acids 149-268 of human MESP1 (NP_061140.1).

Synonyms

bHLHc5; MESP1

Contact

☎ | 400-999-6126

✉ | cn.market@abclonal.com.cn

🌐 | www.abclonal.com.cn

Product Information

Source

Rabbit

Isotype

IgG

Purification

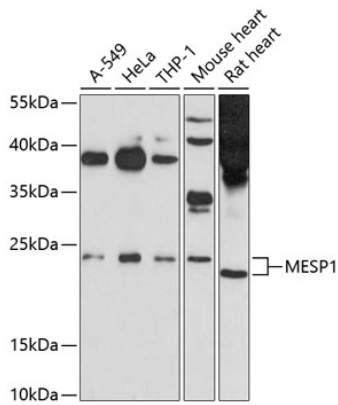
Affinity purification

Storage

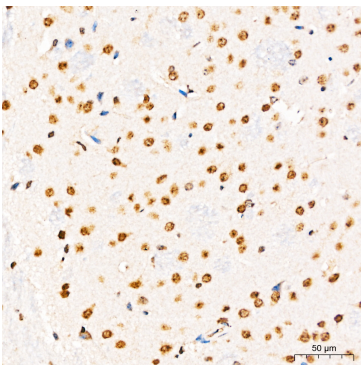
Store at -20°C. Avoid freeze / thaw cycles.

Buffer: PBS with 0.02% sodium azide, 50% glycerol, pH 7.3.

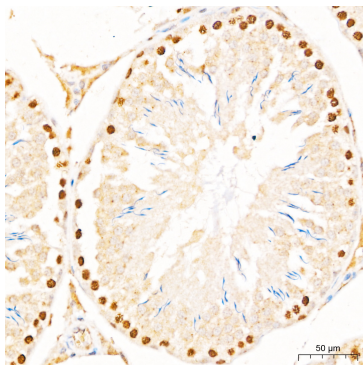
Validation Data



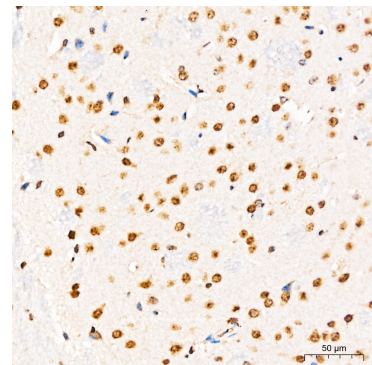
Western blot analysis of various lysates using MESP1 Rabbit pAb (A10148) at 1:1000 dilution. Secondary antibody: HRP-conjugated Goat anti-Rabbit IgG (H+L) (AS014) at 1:10000 dilution. Lysates/proteins: 25µg per lane. Blocking buffer: 3% nonfat dry milk in TBST. Detection: ECL Basic Kit (RM00020). Exposure time: 60s.



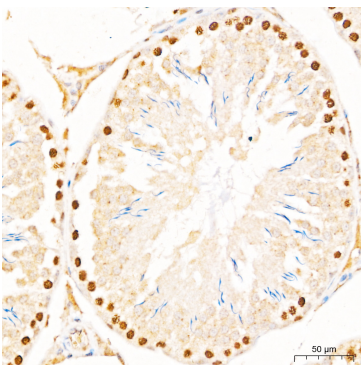
Immunohistochemistry analysis of paraffin-embedded Mouse brain tissue using MESP1 Rabbit pAb (A10148) at a dilution of 1:600 (40x lens). High pressure antigen retrieval performed with 0.01M Citrate Buffer (pH 6.0) prior to IHC staining.



Immunohistochemistry analysis of paraffin-embedded Rat testis tissue using MESP1 Rabbit pAb (A10148) at a dilution of 1:600 (40x lens). High pressure antigen retrieval performed with 0.01M Citrate Buffer (pH 6.0) prior to IHC staining.



Immunohistochemistry analysis of paraffin-embedded Mouse brain tissue using MESP1 Rabbit pAb (A10148) at a dilution of 1:600 (40x lens). High pressure antigen retrieval performed with 0.01M Citrate Buffer (pH 6.0) prior to IHC staining.



Immunohistochemistry analysis of paraffin-embedded Rat testis tissue using MESP1 Rabbit pAb (A10148) at a dilution of 1:600 (40x lens). High pressure antigen retrieval performed with 0.01M Citrate Buffer (pH 6.0) prior to IHC staining.