

# ARMS2 Rabbit pAb

Catalog No.: A10161

## Basic Information

### Observed MW

11kDa

### Calculated MW

11kDa

### Category

Primary antibody

### Applications

ELISA, WB

### Cross-Reactivity

Mouse

## Background

This gene encodes a small secreted protein specific to primates. This protein is a component of the choroidal extracellular matrix of the eye. Mutations in this gene are associated with age-related macular degeneration.

## Recommended Dilutions

WB 1:200 - 1:1000

## Immunogen Information

### Gene ID

387715

### Swiss Prot

P0C7Q2

### Immunogen

Recombinant fusion protein containing a sequence corresponding to amino acids 1-107 of human ARMS2 (NP\_001093137.1).

### Synonyms

ARMD8; ARMS2

## Contact

 | 400-999-6126

 | [cn.market@abclonal.com.cn](mailto:cn.market@abclonal.com.cn)

 | [www.abclonal.com.cn](http://www.abclonal.com.cn)

## Product Information

### Source

Rabbit

### Isotype

IgG

### Purification

Affinity purification

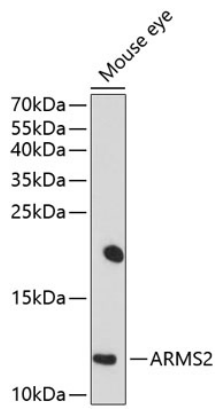
### Storage

Store at -20°C. Avoid freeze / thaw cycles.

Buffer: PBS with 0.02% sodium azide, 50% glycerol, pH7.3.

## Validation Data

---



Western blot analysis of extracts of mouse eye, using ARMS2 antibody (A10161) at 1:1000 dilution.  
Secondary antibody: HRP Goat Anti-Rabbit IgG (H+L) (AS014) at 1:10000 dilution.  
Lysates/proteins: 25µg per lane.  
Blocking buffer: 3% nonfat dry milk in TBST.  
Detection: ECL Basic Kit (RM00020).  
Exposure time: 90s.