

IL36G Rabbit pAb

Catalog No.: A10165

Basic Information

Observed MW

18kDa

Calculated MW

18kDa

Category

Primary antibody

Applications

WB,IF/ICC,ELISA

Cross-Reactivity

Human, Mouse

Background

Enables cytokine activity. Acts upstream of or within negative regulation of myoblast differentiation; negative regulation of myoblast fusion; and positive regulation of interleukin-6 production. Located in extracellular space. Orthologous to human IL36G (interleukin 36 gamma).

Recommended Dilutions

WB 1:500 - 1:1000

IF/ICC 1:50 - 1:200

ELISA Recommended starting concentration is 1 µg/mL. Please optimize the concentration based on your specific assay requirements.

Immunogen Information

Gene ID

215257

Swiss Prot

Immunogen

Recombinant fusion protein containing a sequence corresponding to amino acids 1-193 of mouse IL36G (NP_705731.2).

Synonyms

If36g; Il1f9; IL-36gamma; IL36G

Contact

 | 400-999-6126

 | cn.market@abclonal.com.cn

 | www.abclonal.com.cn

Product Information

Source

Rabbit

Isotype

IgG

Purification

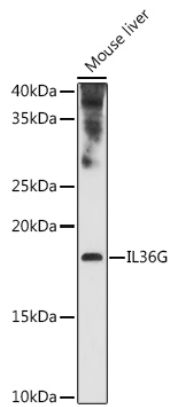
Affinity purification

Storage

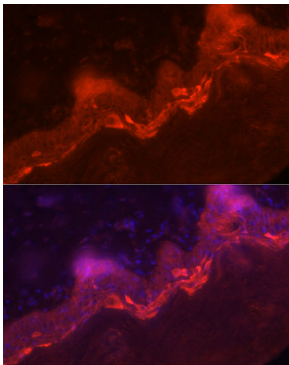
Store at -20°C. Avoid freeze / thaw cycles.

Buffer: PBS with 0.09% Sodium azide,50% glycerol,pH7.3.

Validation Data



Western blot analysis of various lysates using IL36G Rabbit pAb (A10165) at 1:1000 dilution.
Secondary antibody: HRP-conjugated Goat anti-Rabbit IgG (H+L) (AS014) at 1:10000 dilution.
Lysates/proteins: 25µg per lane.
Blocking buffer: 3% nonfat dry milk in TBST.
Detection: ECL Enhanced Kit (RM00021).
Exposure time: 180s.



Immunofluorescence analysis of paraffin-embedded human skin using IL36G Rabbit pAb (A10165) at dilution of 1:100 (40x lens).
Secondary antibody: Cy3-conjugated Goat anti-Rabbit IgG (H+L) (AS007) at 1:500 dilution. Blue: DAPI for nuclear staining.