

ADAM2 Rabbit pAb

Catalog No.: A10188

Basic Information

Observed MW

82kDa

Calculated MW

82kDa

Category

Primary antibody

Applications

ELISA, WB

Cross-Reactivity

Human, Mouse, Rat

Background

This gene encodes a member of the ADAM (a disintegrin and metalloprotease domain) family. Members of this family are membrane-anchored proteins structurally related to snake venom disintegrins, and have been implicated in a variety of biological processes involving cell-cell and cell-matrix interactions, including fertilization, muscle development, and neurogenesis. The encoded protein is a subunit of an integral sperm membrane glycoprotein called fertilin, which plays an important role in sperm-egg interactions. Alternative splicing results in multiple transcript variants encoding different isoforms.

Recommended Dilutions

WB 1:500 - 1:2000

Immunogen Information

Gene ID

2515

Swiss Prot

Q99965

Immunogen

Recombinant fusion protein containing a sequence corresponding to amino acids 476-686 of human ADAM2 (Q99965).

Synonyms

CT15; FTNB; PH30; CRYN1; CRYN2; PH-30b; PH30-beta; ADAM2

Contact

☎ | 400-999-6126

✉ | cn.market@abclonal.com.cn

🌐 | www.abclonal.com.cn

Product Information

Source

Rabbit

Isotype

IgG

Purification

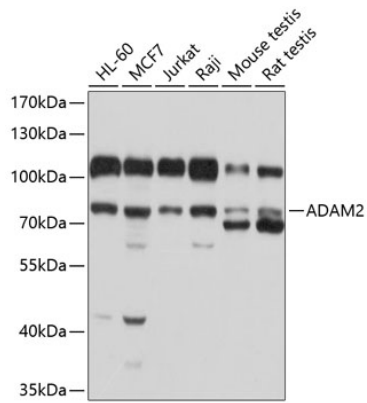
Affinity purification

Storage

Store at -20°C. Avoid freeze / thaw cycles.

Buffer: PBS with 0.02% sodium azide, 50% glycerol, pH 7.3.

Validation Data



Western blot analysis of extracts of various cell lines, using ADAM2 antibody (A10188) at 1:1000 dilution.
Secondary antibody: HRP Goat Anti-Rabbit IgG (H+L) (AS014) at 1:10000 dilution.
Lysates/proteins: 25 μ g per lane.
Blocking buffer: 3% nonfat dry milk in TBST.
Detection: ECL Basic Kit (RM00020).
Exposure time: 1s.